



NEBRASKA VS. PURDUE

1/29/2017

Pinnacle Bank Arena (Lincoln, Neb.)

FINAL STATS

Nebraska

(10-11, 4-5)

83

Purdue

(17-5, 6-3)

80

Start Time: 3:31 p.m.

Officials: Rob Riley, John Higgins, Kelly Pfeifer

Attendance: 15715

Actual Attendance:14,194

Official Basketball Box Score -- Game Totals -- Final Statistics

Purdue vs Nebraska

1/29/2017 3:31 p.m. at Pinnacle Bank Arena (Lincoln, Neb.)

Purdue 80 - 17-5, 6-3

##	Player		Total			3-Ptr			Rebounds			PF	TP	A	TO	Blk	Stl	Min
			FG	FGA	FT	FTA	FG	FGA	FT	FTA	Off							
03	EDWARDS,CARSEN	g	4	11	4	4	4	4	1	3	4	4	16	3	2	0	3	32
11	THOMPSON,PJ	g	3	6	0	0	0	0	1	2	3	5	9	6	0	0	1	33
12	EDWARDS,VINCENT	f	3	10	0	0	0	0	2	3	5	0	6	0	1	1	0	34
31	MATHIAS,DAKOTA	g	6	8	2	2	2	2	0	2	2	3	19	0	2	0	2	34
50	SWANIGAN,CALEB	f	5	15	3	4	4	4	5	9	14	4	14	6	4	0	1	34
14	CLINE,RYAN		2	5	0	0	0	0	0	1	1	3	5	2	0	0	0	13
44	HAAS,ISAAC		4	7	3	3	3	3	1	4	5	2	11	0	2	1	1	13
55	ALBRECHT,SPIKE		0	0	0	0	0	0	0	0	0	0	0	0	0	0	0	7
TEAM									1	0	1	0		2				
TOTALS			27	62	12	13	13	13	11	24	35	21	80	17	13	2	8	200

Deadball Rebounds: 0,0

FG %	1st Half:	12-34	35.3%	2nd Half:	15-28	53.6%	Game:	27-62	43.5%
3FG %	1st Half:	6-13	46.2%	2nd Half:	8-11	72.7%	Game:	14-24	58.3%
FT %	1st Half:	3-3	100.0%	2nd Half:	9-10	90.0%	Game:	12-13	92.3%

Nebraska 83 - 10-11, 4-5

##	Player		Total			3-Ptr			Rebounds			PF	TP	A	TO	Blk	Stl	Min
			FG	FGA	FT	FTA	FG	FGA	FT	FTA	Off							
00	WEBSTER,TAI	g	5	18	4	4	4	4	2	6	8	2	15	6	3	1	0	35
05	WATSON JR.,GLYNN	g	3	7	4	4	4	4	0	3	3	3	12	1	1	0	1	32
11	TAYLOR,EVAN	g	1	4	0	0	0	0	1	4	5	2	2	2	1	1	2	30
12	JACOBSON,MICHAEL	f	4	10	1	1	1	1	5	2	7	4	9	2	1	0	1	23
32	TSHIMANGA,JORDY	c	2	6	2	5	5	5	0	3	3	5	6	0	2	0	0	19
02	HORNE,JERIAH		7	12	0	0	0	0	3	4	7	0	16	1	0	0	0	24
10	MCVEIGH,JACK		5	7	7	10	10	10	1	2	3	0	21	1	1	2	0	33
15	ROBY,ISAIAH		1	1	0	0	0	0	1	0	1	0	2	0	0	0	0	4
TEAM									2	1	3	0		0				
TOTALS			28	65	18	24	24	24	15	25	40	16	83	13	9	4	4	200

Deadball Rebounds: 4,0

FG %	1st Half:	15-36	41.7%	2nd Half:	13-29	44.8%	Game:	28-65	43.1%
3FG %	1st Half:	7-11	63.6%	2nd Half:	2-6	33.3%	Game:	9-17	52.9%
FT %	1st Half:	2-4	50.0%	2nd Half:	16-20	80.0%	Game:	18-24	75.0%

Officials: Rob Riley, John Higgins, Kelly Pfeifer
 Technical Fouls: Purdue- None. Nebraska- None.
 Attendance: 15715
 Actual Attendance:14,194

Score by periods	1st	2nd	Total
Purdue	33	47	80
Nebraska	39	44	83

Points	In Paint	Off T/O	2nd Chance	Fast Break	Bench
PURDUE	20	7	13	0	16
NEB	32	16	13	4	39

Last FG - PURDUE 2nd-02:24, NEB 2nd-00:41.
 Largest lead - Purdue by 9 1st-11:22; Nebraska by 8 1st-00:10
 PURDUE led for 26:27. NEB led for 10:43. Game was tied for 2:50.

Score tied - 2 times
 Lead changed - 9 times

Official Basketball Box Score -- Game Totals -- First Half Statistics

Purdue vs Nebraska

1/29/2017 3:31 p.m. at Pinnacle Bank Arena (Lincoln, Neb.)

Purdue 33 • 17-5, 6-3

##	Player		Total FG-FGA	3-Ptr FG-FGA	FT-FTA	Rebounds			PF	TP	A	TO	Blk	Stl	Min
						Off	Def	Tot							
03	EDWARDS,CARSEN	g	2-6	2-3	0-0	0	2	2	2	6	2	1	0	0	17
11	THOMPSON,PJ	g	2-4	2-4	0-0	1	1	2	1	6	2	0	0	0	17
12	EDWARDS,VINCENT	f	1-5	0-1	0-0	1	1	2	0	2	0	1	0	0	14
31	MATHIAS,DAKOTA	g	1-1	1-1	0-0	0	1	1	1	3	0	0	0	0	14
50	SWANIGAN,CALEB	f	3-9	1-2	0-0	4	5	9	1	7	3	3	0	1	18
14	CLINE,RYAN		0-3	0-2	0-0	0	1	1	1	0	1	0	0	0	8
44	HAAS,ISAAC		3-6	0-0	3-3	1	3	4	1	9	0	0	0	1	9
55	ALBRECHT,SPIKE		0-0	0-0	0-0	0	0	0	0	0	0	0	0	0	3
TEAM						0	0	0	0		0				
Totals			12-34	6-13	3-3	7	14	21	7	33	8	5	0	2	100

FG % Half: 12-34 35.3%
 3FG % Half: 6-13 46.2%
 FT % Half: 3-3 100.0%

Nebraska 39 • 10-11, 4-5

##	Player		Total FG-FGA	3-Ptr FG-FGA	FT-FTA	Rebounds			PF	TP	A	TO	Blk	Stl	Min
						Off	Def	Tot							
00	WEBSTER,TAI	g	3-8	0-1	2-2	2	3	5	2	8	4	1	0	0	18
05	WATSON JR.,GLYNN	g	3-5	2-2	0-0	0	2	2	1	8	1	0	0	0	19
11	TAYLOR,EVAN	g	0-3	0-0	0-0	0	3	3	0	0	1	0	0	1	13
12	JACOBSON,MICHAEL	f	1-4	0-0	0-0	1	1	2	0	2	0	0	0	0	10
32	TSHIMANGA,JORDY	c	0-3	0-0	0-2	0	2	2	3	0	0	2	0	0	12
02	HORNE,JERIAH		3-7	1-3	0-0	3	1	4	0	7	0	0	0	0	11
10	MCVEIGH,JACK		4-5	4-5	0-0	0	2	2	0	12	1	0	1	0	13
15	ROBY,ISAIAH		1-1	0-0	0-0	1	0	1	0	2	0	0	0	0	4
TEAM						1	1	2	0		0				
Totals			15-36	7-11	2-4	8	15	23	6	39	7	3	1	1	100

FG % Half: 15-36 41.7%
 3FG % Half: 7-11 63.6%
 FT % Half: 2-4 50.0%

Officials: Rob Riley, John Higgins, Kelly Pfeifer
 Technical Fouls: Purdue- None. Nebraska- None.
 Actual Attendance:14,194

Score by periods	1st	2nd	Total
Purdue	33	47	80
Nebraska	39	44	83

Points	In Paint	Off T/O	2nd Chance	Fast Break	Bench
PURDUE	10	7	7	0	9
NEB	12	8	11	4	21

Last FG - PURDUE 1st-00:05, NEB 1st-01:22.
 PURDUE led for 12:46. NEB led for 6:41. Game was tied for 0:33.

Score tied - 0 times
 Lead changed - 3 times

Purdue vs Nebraska
1/29/2017; 3:31 p.m. at Pinnacle Bank Arena (Lincoln, Neb.)
Period 1 Play-By-Play

VISITORS: Purdue	Time	Score	Margin	HOME: Nebraska
	19:41			TURNOVER by TSHIMANGA,JORDY
STEAL by SWANIGAN,CALEB	19:38			
GOOD! 3PTR by EDWARDS,CARSEN	19:27	0-3	V 3	
ASSIST by SWANIGAN,CALEB	19:27			
	19:03			MISSED JUMPER by JACOBSON,MICHAEL
REBOUND (DEF) by THOMPSON,PJ	19:03			
MISSED 3PTR by EDWARDS,VINCENT	18:43			
	18:43			REBOUND (DEF) by TAYLOR,EVAN
	18:34	2-3	V 1	GOOD! JUMPER by WATSON JR.,GLYNN
MISSED JUMPER by EDWARDS,VINCENT	18:07			
	18:07			REBOUND (DEF) by WATSON JR.,GLYNN
	17:58			MISSED 3PTR by WEBSTER,TAI
REBOUND (DEF) by SWANIGAN,CALEB	17:58			
GOOD! 3PTR by SWANIGAN,CALEB	17:48	2-6	V 4	
ASSIST by THOMPSON,PJ	17:48			
	17:34			MISSED JUMPER by TSHIMANGA,JORDY
	17:31			REBOUND (OFF) by TEAM
	17:29			MISSED JUMPER by TSHIMANGA,JORDY
REBOUND (DEF) by SWANIGAN,CALEB	17:29			
GOOD! 3PTR by MATHIAS,DAKOTA	17:07	2-9	V 7	
ASSIST by THOMPSON,PJ	17:06			
	17:05			TIMEOUT 30SEC
	17:05			SUB OUT: TSHIMANGA,JORDY
	16:43	5-9	V 4	GOOD! 3PTR by MCVEIGH,JACK
	16:43			ASSIST by WATSON JR.,GLYNN
MISSED JUMPER by EDWARDS,VINCENT	16:23			
	16:23			BLOCK by MCVEIGH,JACK
	16:22			REBOUND (DEF) by WEBSTER,TAI
	16:18	7-9	V 2	GOOD! LAYUP by WEBSTER,TAI [FB/PNT]
MISSED JUMPER by SWANIGAN,CALEB	16:03			
	16:03			REBOUND (DEF) by JACOBSON,MICHAEL
	15:45			MISSED LAYUP by WATSON JR.,GLYNN
REBOUND (DEF) by SWANIGAN,CALEB	15:45			
GOOD! 3PTR by THOMPSON,PJ	15:38	7-12	V 5	
ASSIST by EDWARDS,CARSEN	15:38			
	15:21			MISSED JUMPER by TAYLOR,EVAN
REBOUND (DEF) by EDWARDS,CARSEN	15:21			
MISSED 3PTR by SWANIGAN,CALEB	15:08			
	15:08			REBOUND (DEF) by TAYLOR,EVAN
	14:53			MISSED JUMPER by JACOBSON,MICHAEL
REBOUND (DEF) by EDWARDS,CARSEN	14:53			
MISSED 3PTR by EDWARDS,CARSEN	14:46			
REBOUND (OFF) by EDWARDS,VINCENT	14:46			
TURNOVER by EDWARDS,VINCENT	14:39			
	14:39			TIMEOUT MEDIA
SUB IN: CLINE,RYAN	14:39			
SUB IN: HAAS,ISAAC	14:39			
SUB OUT: MATHIAS,DAKOTA	14:39			
SUB OUT: SWANIGAN,CALEB	14:39			
	14:39			SUB IN: TSHIMANGA,JORDY
	14:39			SUB IN: ROBY,ISIAH
	14:39			SUB OUT: TAYLOR,EVAN
	14:39			SUB OUT: JACOBSON,MICHAEL

VISITORS: Purdue	Time	Score	Margin	HOME: Nebraska
	14:31			MISSED JUMPER by WEBSTER,TAI
	14:31			REBOUND (OFF) by WEBSTER,TAI
	14:13			MISSED JUMPER by WEBSTER,TAI
REBOUND (DEF) by HAAS,ISAAC	14:13			
MISSED JUMPER by HAAS,ISAAC	13:54			
	13:54			REBOUND (DEF) by TSHIMANGA,JORDY
	13:42			TURNOVER by TSHIMANGA,JORDY
STEAL by HAAS,ISAAC	13:40			
	13:31			FOUL by WEBSTER,TAI
SUB IN: SWANIGAN,CALEB	13:31			
SUB OUT: EDWARDS,VINCENT	13:31			
	13:31			SUB IN: HORNE,JERIAH
	13:31			SUB IN: TAYLOR,EVAN
	13:31			SUB OUT: WATSON JR.,GLYNN
	13:28			FOUL by TSHIMANGA,JORDY
GOOD! FT by HAAS,ISAAC	13:28	7-13	V 6	
GOOD! FT by HAAS,ISAAC	13:28	7-14	V 7	
SUB IN: ALBRECHT,SPIKE	13:28			
SUB OUT: THOMPSON,PJ	13:28			
	13:14			MISSED JUMPER by TSHIMANGA,JORDY
	13:14			REBOUND (OFF) by ROBY,ISIAAH
	13:11	9-14	V 5	GOOD! JUMPER by ROBY,ISIAAH [PNT]
MISSED JUMPER by EDWARDS,CARSEN	12:50			
REBOUND (OFF) by SWANIGAN,CALEB	12:50			
MISSED JUMPER by SWANIGAN,CALEB	12:45			
REBOUND (OFF) by HAAS,ISAAC	12:45			
GOOD! JUMPER by HAAS,ISAAC [PNT]	12:44	9-16	V 7	
FOUL by CLINE,RYAN	12:30			
	12:30			MISSED FT by TSHIMANGA,JORDY
	12:30			REBOUND (DEADB) by TEAM
	12:30			MISSED FT by TSHIMANGA,JORDY
REBOUND (DEF) by HAAS,ISAAC	12:30			
MISSED 3PTR by CLINE,RYAN	12:12			
REBOUND (OFF) by SWANIGAN,CALEB	12:12			
TIMEOUT TEAM	12:05			
SUB IN: MATHIAS,DAKOTA	12:05			
SUB OUT: EDWARDS,CARSEN	12:05			
	11:58			SUB IN: WATSON JR.,GLYNN
	11:58			SUB OUT: WEBSTER,TAI
MISSED JUMPER by SWANIGAN,CALEB	11:52			
	11:52			REBOUND (DEF) by WATSON JR.,GLYNN
	11:39			MISSED 3PTR by HORNE,JERIAH
REBOUND (DEF) by HAAS,ISAAC	11:39			
GOOD! JUMPER by HAAS,ISAAC [PNT]	11:22	9-18	V 9	
ASSIST by SWANIGAN,CALEB	11:22			
	10:53			MISSED JUMPER by TAYLOR,EVAN
	10:53			REBOUND (OFF) by HORNE,JERIAH
FOUL by SWANIGAN,CALEB	10:51			
	10:43			MISSED JUMPER by HORNE,JERIAH
	10:43			REBOUND (OFF) by HORNE,JERIAH
FOUL by HAAS,ISAAC	10:42			
SUB IN: EDWARDS,VINCENT	10:42			
SUB OUT: HAAS,ISAAC	10:42			
SUB IN: THOMPSON,PJ	10:31			
SUB OUT: ALBRECHT,SPIKE	10:31			
	10:31			SUB IN: WEBSTER,TAI
	10:31			SUB OUT: ROBY,ISIAAH
	10:26	12-18	V 6	GOOD! 3PTR by WATSON JR.,GLYNN

VISITORS: Purdue	Time	Score	Margin	HOME: Nebraska
TURNOVER by SWANIGAN,CALEB	10:02			
	10:00			STEAL by TAYLOR,EVAN
	09:57	15-18	V 3	GOOD! 3PTR by HORNE,JERIAH
	09:57			ASSIST by TAYLOR,EVAN
	09:40			FOUL by TSHIMANGA,JORDY
SUB IN: EDWARDS,CARSEN	09:40			
SUB OUT: CLINE,RYAN	09:40			
	09:40			SUB IN: MCVEIGH,JACK
	09:40			SUB OUT: TAYLOR,EVAN
MISSED 3PTR by THOMPSON,PJ	09:25			
	09:25			REBOUND (DEF) by MCVEIGH,JACK
FOUL by EDWARDS,CARSEN	09:13			
	09:06			MISSED JUMPER by WEBSTER,TAI
REBOUND (DEF) by EDWARDS,VINCENT	09:06			
MISSED LAYUP by EDWARDS,VINCENT	08:59			
	08:59			REBOUND (DEF) by TSHIMANGA,JORDY
	08:53	17-18	V 1	GOOD! DUNK by HORNE,JERIAH [FB/PNT]
	08:53			ASSIST by MCVEIGH,JACK
TIMEOUT 30SEC	08:44			
	08:44			SUB IN: JACOBSON,MICHAEL
	08:44			SUB OUT: TSHIMANGA,JORDY
MISSED JUMPER by EDWARDS,CARSEN	08:34			
	08:34			REBOUND (DEF) by HORNE,JERIAH
	08:24			MISSED 3PTR by HORNE,JERIAH
REBOUND (DEF) by MATHIAS,DAKOTA	08:24			
GOOD! 3PTR by EDWARDS,CARSEN	07:58	17-21	V 4	
ASSIST by SWANIGAN,CALEB	07:58			
	07:41			MISSED JUMPER by WEBSTER,TAI
	07:41			REBOUND (OFF) by JACOBSON,MICHAEL
	07:40			TIMEOUT MEDIA
	07:33	19-21	V 2	GOOD! JUMPER by JACOBSON,MICHAEL
TURNOVER by SWANIGAN,CALEB	07:17			
	06:57	22-21	H 1	GOOD! 3PTR by WATSON JR.,GLYNN
	06:57			ASSIST by WEBSTER,TAI
MISSED JUMPER by SWANIGAN,CALEB	06:27			
REBOUND (OFF) by SWANIGAN,CALEB	06:27			
MISSED JUMPER by SWANIGAN,CALEB	06:25			
REBOUND (OFF) by SWANIGAN,CALEB	06:25			
GOOD! JUMPER by SWANIGAN,CALEB [PNT]	06:22	22-23	V 1	
	06:09			MISSED JUMPER by HORNE,JERIAH
	06:09			REBOUND (OFF) by HORNE,JERIAH
	06:06	24-23	H 1	GOOD! JUMPER by HORNE,JERIAH [PNT]
TURNOVER by SWANIGAN,CALEB	05:48			
SUB IN: HAAS,ISAAC	05:48			
SUB OUT: EDWARDS,VINCENT	05:48			
	05:48			SUB IN: TSHIMANGA,JORDY
	05:48			SUB OUT: JACOBSON,MICHAEL
	05:31			MISSED JUMPER by WATSON JR.,GLYNN
REBOUND (DEF) by SWANIGAN,CALEB	05:31			
TURNOVER by EDWARDS,CARSEN	05:20			
	05:04	26-23	H 3	GOOD! LAYUP by WEBSTER,TAI [PNT]
MISSED JUMPER by HAAS,ISAAC	04:44			
	04:44			REBOUND (DEF) by WEBSTER,TAI
	04:38	29-23	H 6	GOOD! 3PTR by MCVEIGH,JACK
	04:38			ASSIST by WEBSTER,TAI
MISSED JUMPER by EDWARDS,CARSEN	04:16			
REBOUND (OFF) by THOMPSON,PJ	04:16			
GOOD! 3PTR by THOMPSON,PJ	04:10	29-26	H 3	

VISITORS: Purdue	Time	Score	Margin	HOME: Nebraska
FOUL by MATHIAS,DAKOTA	03:48			
	03:48			TIMEOUT MEDIA
	03:48			SUB IN: TAYLOR,EVAN
	03:48			SUB OUT: HORNE,JERIAH
	03:39	32-26	H 6	GOOD! 3PTR by MCVEIGH,JACK
	03:39			ASSIST by WEBSTER,TAI
MISSED 3PTR by THOMPSON,PJ	03:11			
	03:11			REBOUND (DEF) by TAYLOR,EVAN
	03:02			FOUL by WEBSTER,TAI
	03:02			TURNOVER by WEBSTER,TAI
SUB IN: CLINE,RYAN	03:02			
SUB OUT: MATHIAS,DAKOTA	03:02			
GOOD! JUMPER by SWANIGAN,CALEB	02:51	32-28	H 4	
ASSIST by EDWARDS,CARSEN	02:51			
	02:28			MISSED JUMPER by TAYLOR,EVAN
REBOUND (DEF) by CLINE,RYAN	02:28			
GOOD! JUMPER by HAAS,ISAAC [PNT]	02:12	32-30	H 2	
ASSIST by CLINE,RYAN	02:12			
	02:12			FOUL by TSHIMANGA,JORDY
GOOD! FT by HAAS,ISAAC	02:12	32-31	H 1	
SUB IN: EDWARDS,VINCENT	02:12			
SUB OUT: SWANIGAN,CALEB	02:12			
	02:12			SUB IN: JACOBSON,MICHAEL
	02:12			SUB OUT: TSHIMANGA,JORDY
	01:55			MISSED 3PTR by MCVEIGH,JACK
	01:55			REBOUND (OFF) by WEBSTER,TAI
	01:52	34-31	H 3	GOOD! JUMPER by WEBSTER,TAI [PNT]
	01:37			FOUL by WATSON JR.,GLYNN
MISSED 3PTR by CLINE,RYAN	01:31			
	01:31			REBOUND (DEF) by WEBSTER,TAI
	01:22	37-31	H 6	GOOD! 3PTR by MCVEIGH,JACK
	01:22			ASSIST by WEBSTER,TAI
MISSED JUMPER by HAAS,ISAAC	01:05			
	01:05			REBOUND (DEF) by MCVEIGH,JACK
FOUL by THOMPSON,PJ	00:54			
SUB IN: SWANIGAN,CALEB	00:54			
SUB OUT: HAAS,ISAAC	00:54			
	00:54			SUB IN: HORNE,JERIAH
	00:54			SUB OUT: WEBSTER,TAI
	00:45			MISSED JUMPER by JACOBSON,MICHAEL
REBOUND (DEF) by SWANIGAN,CALEB	00:45			
MISSED JUMPER by CLINE,RYAN	00:21			
	00:21			REBOUND (DEF) by TEAM
	00:18			SUB IN: WEBSTER,TAI
	00:18			SUB OUT: JACOBSON,MICHAEL
FOUL by EDWARDS,CARSEN	00:10			
	00:10	38-31	H 7	GOOD! FT by WEBSTER,TAI
	00:10	39-31	H 8	GOOD! FT by WEBSTER,TAI
	00:10			SUB IN: ROBY,ISIAAH
	00:10			SUB OUT: WEBSTER,TAI
GOOD! JUMPER by EDWARDS,VINCENT [PNT]	00:05	39-33	H 6	

Purdue 33, Nebraska 39

Period 1-only In Off 2nd Fast
Paint T/O Chance Break Bench

Period 1-only	In Paint	Off T/O	2nd Chance	Fast Break	Bench	
PURDUE	10	7	7	0	9	Score tied - 0 times
NEB	12	8	11	4	21	Lead changed - 2 times

Official Basketball Box Score -- Game Totals -- Second Half Statistics

Purdue vs Nebraska

1/29/2017 3:31 p.m. at Pinnacle Bank Arena (Lincoln, Neb.)

Purdue 47 • 17-5, 6-3

##	Player		Total		3-Ptr		FT-FTA		Rebounds			PF	TP	A	TO	Blk	Stl	Min
			FG-FGA	FG-FGA	FG-FGA	FT-FTA	Off	Def	Tot									
03	EDWARDS,CARSEN	g	2-5	2-2	4-4	1	1	2	1	1	2	2	10	1	1	0	3	15
11	THOMPSON,PJ	g	1-2	1-2	0-0	0	1	1	0	1	1	4	3	4	0	0	1	16
12	EDWARDS,VINCENT	f	2-5	0-0	0-0	1	2	3	0	2	3	0	4	0	0	1	0	20
31	MATHIAS,DAKOTA	g	5-7	4-6	2-2	0	1	1	2	1	1	2	16	0	2	0	2	20
50	SWANIGAN,CALEB	f	2-6	0-0	3-4	1	4	5	3	4	5	3	7	3	1	0	0	16
14	CLINE,RYAN		2-2	1-1	0-0	0	0	0	2	0	0	2	5	1	0	0	0	5
44	HAAS,ISAAC		1-1	0-0	0-0	0	1	1	1	0	1	1	2	0	2	1	0	4
55	ALBRECHT,SPIKE		0-0	0-0	0-0	0	0	0	0	0	0	0	0	0	0	0	0	4
TEAM						1	0	1	0	0	1	0		2				
Totals			15-28	8-11	9-10	4	10	14	14	10	14	14	47	9	8	2	6	100

FG % Half: 15-28 53.6%
 3FG % Half: 8-11 46.2%
 FT % Half: 9-10 90.0%

Nebraska 44 • 10-11, 4-5

##	Player		Total		3-Ptr		FT-FTA		Rebounds			PF	TP	A	TO	Blk	Stl	Min
			FG-FGA	FG-FGA	FG-FGA	FT-FTA	Off	Def	Tot									
00	WEBSTER,TAI	g	2-10	1-3	2-2	0	3	3	0	3	3	0	7	2	2	1	0	17
05	WATSON JR.,GLYNN	g	0-2	0-0	4-4	0	1	1	2	1	1	2	4	0	1	0	1	13
11	TAYLOR,EVAN	g	1-1	0-0	0-0	1	1	2	2	1	2	2	2	1	1	1	1	17
12	JACOBSON,MICHAEL	f	3-6	0-0	1-1	4	1	5	4	1	5	4	7	2	1	0	1	13
32	TSHIMANGA,JORDY	c	2-3	0-0	2-3	0	1	1	2	1	1	2	6	0	0	0	0	7
02	HORNE,JERIAH		4-5	1-2	0-0	0	3	3	0	3	3	0	9	1	0	0	0	13
10	MCVEIGH,JACK		1-2	0-1	7-10	1	0	1	0	0	1	0	9	0	1	1	0	20
15	ROBY,ISIAH		0-0	0-0	0-0	0	0	0	0	0	0	0	0	0	0	0	0	0
TEAM						1	0	1	0	0	1	0		0				
Totals			13-29	2-6	16-20	7	10	17	10	10	17	10	44	6	6	3	3	100

FG % Half: 13-29 44.8%
 3FG % Half: 2-6 63.6%
 FT % Half: 16-20 80.0%

Officials: Rob Riley, John Higgins, Kelly Pfeifer
 Technical Fouls: Purdue- None. Nebraska- None.
 Actual Attendance:14,194

Score by periods	1st	2nd	Total
Purdue	33	47	80
Nebraska	39	44	83

Points	In Paint	Off T/O	2nd Chance	Fast Break	Bench
PURDUE	10	0	6	0	7
NEB	20	8	6	0	18

Last FG - PURDUE 2nd-02:24, NEB 2nd-00:41.
 PURDUE led for 13:41. NEB led for 4:02. Game was tied for 2:17.

Score tied - 2 times
 Lead changed - 6 times

Purdue vs Nebraska
1/29/2017; 3:31 p.m. at Pinnacle Bank Arena (Lincoln, Neb.)
Period 2 Play-By-Play

VISITORS: Purdue	Time	Score	Margin	HOME: Nebraska
	20:00			SUB IN: MCVEIGH,JACK
	20:00			SUB OUT: JACOBSON,MICHAEL
MISSED JUMPER by SWANIGAN,CALEB	19:50			
	19:50			BLOCK by WEBSTER,TAI
REBOUND (OFF) by TEAM	19:49			
GOOD! JUMPER by SWANIGAN,CALEB [PNT]	19:36	39-35	H 4	
	19:17	42-35	H 7	GOOD! 3PTR by WEBSTER,TAI
	19:04			FOUL by TSHIMANGA,JORDY
	19:04			SUB IN: JACOBSON,MICHAEL
	19:04			SUB OUT: TSHIMANGA,JORDY
MISSED JUMPER by EDWARDS,CARSEN	19:01			
REBOUND (OFF) by EDWARDS,CARSEN	19:01			
	18:58			FOUL by JACOBSON,MICHAEL
GOOD! FT by EDWARDS,CARSEN	18:58	42-36	H 6	
GOOD! FT by EDWARDS,CARSEN	18:58	42-37	H 5	
	18:48			MISSED JUMPER by WATSON JR.,GLYNN
REBOUND (DEF) by SWANIGAN,CALEB	18:48			
GOOD! DUNK by EDWARDS,VINCENT [PNT]	18:37	42-39	H 3	
ASSIST by SWANIGAN,CALEB	18:37			
	18:18			MISSED JUMPER by WEBSTER,TAI
	18:18			REBOUND (OFF) by JACOBSON,MICHAEL
	18:17			MISSED JUMPER by JACOBSON,MICHAEL
REBOUND (DEF) by SWANIGAN,CALEB	18:16			
GOOD! 3PTR by EDWARDS,CARSEN	18:08	42-42	T	
ASSIST by THOMPSON,PJ	18:08			
	17:57			TIMEOUT TEAM
	17:50	44-42	H 2	GOOD! LAYUP by WEBSTER,TAI [PNT]
TURNOVER by EDWARDS,CARSEN	17:34			
	17:33			STEAL by TAYLOR,EVAN
	17:28			MISSED LAYUP by WEBSTER,TAI
BLOCK by EDWARDS,VINCENT	17:28			
	17:26			REBOUND (OFF) by TEAM
	17:15			MISSED JUMPER by WEBSTER,TAI
REBOUND (DEF) by EDWARDS,VINCENT	17:15			
	17:12			FOUL by TAYLOR,EVAN
GOOD! LAYUP by EDWARDS,VINCENT [PNT]	16:57	44-44	T	
	16:43			TURNOVER by WATSON JR.,GLYNN
STEAL by MATHIAS,DAKOTA	16:42			
TURNOVER by MATHIAS,DAKOTA	16:41			
FOUL by EDWARDS,CARSEN	16:29			
SUB IN: CLINE,RYAN	16:29			
SUB OUT: EDWARDS,CARSEN	16:29			
	16:22			MISSED LAYUP by WEBSTER,TAI
	16:22			REBOUND (OFF) by TAYLOR,EVAN
	16:17			TURNOVER by TAYLOR,EVAN
STEAL by THOMPSON,PJ	16:16			
	16:08			FOUL by JACOBSON,MICHAEL
TURNOVER by TEAM	15:59			
	15:42			MISSED JUMPER by JACOBSON,MICHAEL
REBOUND (DEF) by SWANIGAN,CALEB	15:42			
MISSED JUMPER by EDWARDS,VINCENT	15:25			
	15:25			REBOUND (DEF) by WATSON JR.,GLYNN
	15:08			MISSED JUMPER by WATSON JR.,GLYNN

VISITORS: Purdue	Time	Score	Margin	HOME: Nebraska
REBOUND (DEF) by SWANIGAN,CALEB	15:08			
GOOD! JUMPER by CLINE,RYAN	14:51	44-46	V 2	
FOUL by CLINE,RYAN	14:39			
FOUL by SWANIGAN,CALEB	14:30			
	14:30	45-46	V 1	GOOD! FT by MCVEIGH,JACK
	14:30			MISSED FT by MCVEIGH,JACK
REBOUND (DEF) by HAAS,ISAAC	14:30			
SUB IN: HAAS,ISAAC	14:30			
SUB OUT: SWANIGAN,CALEB	14:30			
GOOD! 3PTR by CLINE,RYAN	14:02	45-49	V 4	
ASSIST by THOMPSON,PJ	14:02			
FOUL by THOMPSON,PJ	13:48			
	13:43			MISSED 3PTR by WEBSTER,TAI
REBOUND (DEF) by EDWARDS,VINCENT	13:43			
TURNOVER by HAAS,ISAAC	13:30			
	13:30			SUB IN: HORNE,JERIAH
	13:30			SUB OUT: TAYLOR,EVAN
	13:14	47-49	V 2	GOOD! LAYUP by MCVEIGH,JACK [PNT]
FOUL by HAAS,ISAAC	13:14			
	13:14	48-49	V 1	GOOD! FT by MCVEIGH,JACK
SUB IN: SWANIGAN,CALEB	13:14			
SUB OUT: EDWARDS,VINCENT	13:14			
GOOD! 3PTR by MATHIAS,DAKOTA	12:55	48-52	V 4	
ASSIST by THOMPSON,PJ	12:55			
SUB IN: EDWARDS,VINCENT	12:49			
SUB OUT: HAAS,ISAAC	12:49			
	12:37	50-52	V 2	GOOD! JUMPER by HORNE,JERIAH [PNT]
	12:37			ASSIST by WEBSTER,TAI
GOOD! 3PTR by THOMPSON,PJ	12:16	50-55	V 5	
ASSIST by CLINE,RYAN	12:16			
FOUL by CLINE,RYAN	12:02			
	12:02	51-55	V 4	GOOD! FT by MCVEIGH,JACK
	12:02	52-55	V 3	GOOD! FT by MCVEIGH,JACK
	12:02	53-55	V 2	GOOD! FT by MCVEIGH,JACK
SUB IN: ALBRECHT,SPIKE	12:02			
SUB OUT: THOMPSON,PJ	12:02			
	12:02			SUB IN: TSHIMANGA,JORDY
	12:02			SUB OUT: JACOBSON,MICHAEL
MISSED JUMPER by SWANIGAN,CALEB	11:44			
	11:44			BLOCK by MCVEIGH,JACK
REBOUND (OFF) by SWANIGAN,CALEB	11:42			
	11:41			FOUL by WATSON JR.,GLYNN
TIMEOUT MEDIA	11:41			
GOOD! JUMPER by SWANIGAN,CALEB [PNT]	11:29	53-57	V 4	
FOUL by SWANIGAN,CALEB	11:10			
	11:10			MISSED FT by TSHIMANGA,JORDY
	11:10			REBOUND (DEADB) by TEAM
	11:09	54-57	V 3	GOOD! FT by TSHIMANGA,JORDY
SUB IN: EDWARDS,CARSEN	11:09			
SUB IN: HAAS,ISAAC	11:09			
SUB OUT: CLINE,RYAN	11:09			
SUB OUT: SWANIGAN,CALEB	11:09			
GOOD! JUMPER by MATHIAS,DAKOTA	10:57	54-59	V 5	
	10:43			MISSED JUMPER by TSHIMANGA,JORDY
BLOCK by HAAS,ISAAC	10:43			
	10:40			REBOUND (OFF) by MCVEIGH,JACK
	10:38			TURNOVER by MCVEIGH,JACK
STEAL by EDWARDS,CARSEN	10:37			

VISITORS: Purdue	Time	Score	Margin	HOME: Nebraska
TURNOVER by HAAS,ISAAC	10:19			
	10:19			SUB IN: TAYLOR,EVAN
	10:19			SUB IN: JACOBSON,MICHAEL
	10:19			SUB OUT: WATSON JR.,GLYNN
	10:19			SUB OUT: TSHIMANGA,JORDY
	10:02			MISSED 3PTR by WEBSTER,TAI
REBOUND (DEF) by MATHIAS,DAKOTA	10:02			
GOOD! LAYUP by HAAS,ISAAC [PNT]	09:47	54-61	V 7	
	09:38			TIMEOUT 30SEC
	09:27			MISSED 3PTR by HORNE,JERIAH
	09:27			REBOUND (OFF) by JACOBSON,MICHAEL
	09:21	56-61	V 5	GOOD! DUNK by HORNE,JERIAH [PNT]
	09:21			ASSIST by JACOBSON,MICHAEL
	09:03			FOUL by JACOBSON,MICHAEL
MISSED 3PTR by MATHIAS,DAKOTA	08:42			
	08:40			REBOUND (DEF) by WEBSTER,TAI
FOUL by MATHIAS,DAKOTA	08:32			
	08:32	57-61	V 4	GOOD! FT by WEBSTER,TAI
	08:32	58-61	V 3	GOOD! FT by WEBSTER,TAI
SUB IN: SWANIGAN,CALEB	08:32			
SUB IN: THOMPSON,PJ	08:32			
SUB OUT: ALBRECHT,SPIKE	08:32			
SUB OUT: HAAS,ISAAC	08:32			
MISSED JUMPER by SWANIGAN,CALEB	08:18			
	08:18			REBOUND (DEF) by HORNE,JERIAH
	08:09			TURNOVER by JACOBSON,MICHAEL
STEAL by MATHIAS,DAKOTA	08:08			
MISSED LAYUP by EDWARDS,CARSEN	08:04			
	08:04			BLOCK by TAYLOR,EVAN
	08:03			REBOUND (DEF) by HORNE,JERIAH
	07:48	60-61	V 1	GOOD! JUMPER by HORNE,JERIAH [PNT]
	07:48			ASSIST by JACOBSON,MICHAEL
	07:29			FOUL by TAYLOR,EVAN
TIMEOUT MEDIA	07:29			
GOOD! FT by EDWARDS,CARSEN	07:29	60-62	V 2	
GOOD! FT by EDWARDS,CARSEN	07:29	60-63	V 3	
	07:15			MISSED JUMPER by JACOBSON,MICHAEL
	07:15			REBOUND (OFF) by JACOBSON,MICHAEL
	06:58	62-63	V 1	GOOD! JUMPER by JACOBSON,MICHAEL
MISSED JUMPER by EDWARDS,VINCENT	06:32			
	06:32			REBOUND (DEF) by WEBSTER,TAI
	06:26			TURNOVER by WEBSTER,TAI
STEAL by EDWARDS,CARSEN	06:26			
MISSED JUMPER by EDWARDS,VINCENT	06:23			
	06:23			REBOUND (DEF) by WEBSTER,TAI
	06:01	64-63	H 1	GOOD! LAYUP by JACOBSON,MICHAEL [PNT]
	06:01			ASSIST by WEBSTER,TAI
FOUL by MATHIAS,DAKOTA	06:00			
	06:00	65-63	H 2	GOOD! FT by JACOBSON,MICHAEL
	06:00			SUB IN: TSHIMANGA,JORDY
	06:00			SUB OUT: JACOBSON,MICHAEL
GOOD! 3PTR by EDWARDS,CARSEN	05:49	65-66	V 1	
ASSIST by THOMPSON,PJ	05:49			
	05:19	67-66	H 1	GOOD! JUMPER by TSHIMANGA,JORDY [PNT]
	05:19			ASSIST by HORNE,JERIAH
GOOD! 3PTR by MATHIAS,DAKOTA	05:02	67-69	V 2	
ASSIST by SWANIGAN,CALEB	05:02			
	04:37			MISSED LAYUP by WEBSTER,TAI

VISITORS: Purdue	Time	Score	Margin	HOME: Nebraska
REBOUND (DEF) by THOMPSON,PJ	04:37			
MISSED 3PTR by THOMPSON,PJ	04:31			
	04:31			REBOUND (DEF) by TAYLOR,EVAN
	04:23			TURNOVER by WEBSTER,TAI
STEAL by EDWARDS,CARSEN	04:22			
MISSED LAYUP by EDWARDS,CARSEN	04:19			
REBOUND (OFF) by EDWARDS,VINCENT	04:19			
MISSED JUMPER by SWANIGAN,CALEB	03:58			
	03:58			REBOUND (DEF) by TSHIMANGA,JORDY
	03:28			MISSED JUMPER by WEBSTER,TAI
REBOUND (DEF) by EDWARDS,CARSEN	03:28			
GOOD! 3PTR by MATHIAS,DAKOTA	03:09	67-72	V 5	
ASSIST by SWANIGAN,CALEB	03:09			
	02:52			TIMEOUT TEAM
	02:52			SUB IN: WATSON JR.,GLYNN
	02:52			SUB OUT: WEBSTER,TAI
	02:43	70-72	V 2	GOOD! 3PTR by HORNE,JERIAH
	02:43			ASSIST by TAYLOR,EVAN
GOOD! 3PTR by MATHIAS,DAKOTA	02:24	70-75	V 5	
ASSIST by EDWARDS,CARSEN	02:24			
	02:04	72-75	V 3	GOOD! JUMPER by TSHIMANGA,JORDY [PNT]
FOUL by SWANIGAN,CALEB	02:04			
	02:04	73-75	V 2	GOOD! FT by TSHIMANGA,JORDY
	01:50			FOUL by TSHIMANGA,JORDY
GOOD! FT by SWANIGAN,CALEB	01:50	73-76	V 3	
MISSED FT by SWANIGAN,CALEB	01:50			
	01:50			REBOUND (DEF) by JACOBSON,MICHAEL
	01:50			SUB IN: JACOBSON,MICHAEL
	01:50			SUB OUT: TSHIMANGA,JORDY
	01:37	75-76	V 1	GOOD! JUMPER by TAYLOR,EVAN [PNT]
	01:20			FOUL by JACOBSON,MICHAEL
GOOD! FT by SWANIGAN,CALEB	01:20	75-77	V 2	
GOOD! FT by SWANIGAN,CALEB	01:20	75-78	V 3	
FOUL by THOMPSON,PJ	01:10			
	01:10	76-78	V 2	GOOD! FT by WATSON JR.,GLYNN
	01:10	77-78	V 1	GOOD! FT by WATSON JR.,GLYNN
TURNOVER by SWANIGAN,CALEB	00:52			
	00:50			STEAL by JACOBSON,MICHAEL
	00:46			MISSED 3PTR by MCVEIGH,JACK
	00:46			REBOUND (OFF) by JACOBSON,MICHAEL
	00:41	79-78	H 1	GOOD! JUMPER by JACOBSON,MICHAEL [PNT]
TIMEOUT 30SEC	00:39			
TURNOVER by TEAM	00:25			
	00:25			SUB IN: WEBSTER,TAI
	00:25			SUB OUT: TAYLOR,EVAN
FOUL by THOMPSON,PJ	00:22			
	00:22			MISSED FT by MCVEIGH,JACK
	00:22			REBOUND (DEADB) by TEAM
	00:22	80-78	H 2	GOOD! FT by MCVEIGH,JACK
	00:22			SUB IN: TAYLOR,EVAN
	00:22			SUB OUT: WEBSTER,TAI
TURNOVER by MATHIAS,DAKOTA	00:13			
	00:12			STEAL by WATSON JR.,GLYNN
FOUL by THOMPSON,PJ	00:09			
	00:09	81-78	H 3	GOOD! FT by WATSON JR.,GLYNN
	00:09	82-78	H 4	GOOD! FT by WATSON JR.,GLYNN
SUB IN: CLINE,RYAN	00:09			
SUB OUT: THOMPSON,PJ	00:09			

VISITORS: Purdue	Time	Score	Margin	HOME: Nebraska
	00:06			FOUL by WATSON JR.,GLYNN
GOOD! FT by MATHIAS,DAKOTA	00:06	82-79	H 3	
GOOD! FT by MATHIAS,DAKOTA	00:06	82-80	H 2	
SUB IN: HAAS,ISAAC	00:06			
SUB OUT: SWANIGAN,CALEB	00:06			
	00:06			SUB IN: WEBSTER,TAI
	00:06			SUB OUT: TAYLOR,EVAN
FOUL by EDWARDS,CARSEN	00:05			
	00:05			MISSED FT by MCVEIGH,JACK
	00:05			REBOUND (DEADB) by TEAM
	00:05	83-80	H 3	GOOD! FT by MCVEIGH,JACK
SUB IN: SWANIGAN,CALEB	00:05			
SUB OUT: HAAS,ISAAC	00:05			
	00:05			SUB IN: TAYLOR,EVAN
	00:05			SUB OUT: WEBSTER,TAI
MISSED 3PTR by MATHIAS,DAKOTA	00:02			
	00:02			REBOUND (DEF) by HORNE,JERIAH

Purdue 80, Nebraska 83

Period 2-only	In Paint	Off T/O	2nd Chance	Fast Break	Bench	
PURDUE	10	0	6	0	7	Score tied - 4 times
NEB	20	8	6	0	18	Lead changed - 6 times

Purdue vs Nebraska
1/29/2017; 3:31 p.m. at Pinnacle Bank Arena (Lincoln, Neb.)
Scoring/Runs Reference

Period 1			
Purdue	Score	Marg	Nebraska
19:27 - EDWARDS 3PTR	3	3-0	-3
		3-2	-1 2
			WATSON JR. JUMPER - 18:34
17:48 - SWANIGAN 3PTR	3	6-2	-4
17:07 - MATHIAS 3PTR	3	9-2	-7
		9-5	-4 3
			MCVEIGH 3PTR - 16:43
		9-7	-2 2
			WEBSTER LAYUP [P] [F] - 16:18
15:38 - THOMPSON 3PTR	3	12-7	-5
13:28 - HAAS FT	1	13-7	-6
13:28 - HAAS FT	1	14-7	-7
		14-9	-5 2
			ROBY JUMPER [P] - 13:11
12:44 - HAAS JUMPER [P]	2	16-9	-7
11:22 - HAAS JUMPER [P]	2	18-9	-9
		18-12	-6 3
			WATSON JR. 3PTR - 10:26
		18-15	-3 3
			HORNE 3PTR - 09:57
		18-17	-1 2
			HORNE DUNK [P] [F] - 08:53
07:58 - EDWARDS 3PTR	3	21-17	-4
		21-19	-2 2
			JACOBSON JUMPER - 07:33
		21-22	1 3
			WATSON JR. 3PTR - 06:57
06:22 - SWANIGAN JUMPER [P]	2	23-22	-1
		23-24	1 2
			HORNE JUMPER [P] - 06:06
		23-26	3 2
			WEBSTER LAYUP [P] - 05:04
		23-29	6 3
			MCVEIGH 3PTR - 04:38
04:10 - THOMPSON 3PTR	3	26-29	3
		26-32	6 3
			MCVEIGH 3PTR - 03:39
02:51 - SWANIGAN JUMPER	2	28-32	4
02:12 - HAAS JUMPER [P]	2	30-32	2
02:12 - HAAS FT	1	31-32	1
		31-34	3 2
			WEBSTER JUMPER [P] - 01:52
		31-37	6 3
			MCVEIGH 3PTR - 01:22
		31-38	7 1
			WEBSTER FT - 00:10
		31-39	8 1
			WEBSTER FT - 00:10
00:05 - EDWARDS JUMPER [P]	2	33-39	6

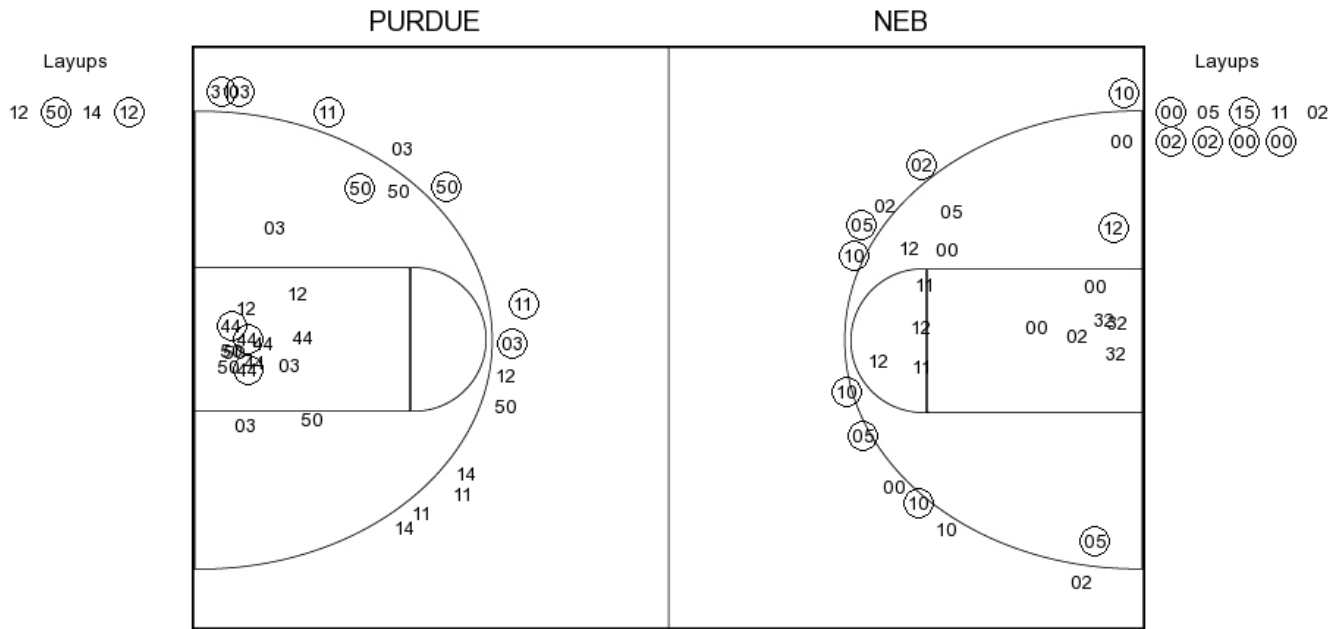
Period 2			
Purdue	Score	Marg	Nebraska
19:36 - SWANIGAN JUMPER [P]	2	35-39	4
		35-42	7 3
			WEBSTER 3PTR - 19:17
18:58 - EDWARDS FT	1	36-42	6
18:58 - EDWARDS FT	1	37-42	5
18:37 - EDWARDS DUNK [P]	2	39-42	3
18:08 - EDWARDS 3PTR	3	42-42	0
		42-44	2 2
			WEBSTER LAYUP [P] - 17:50
16:57 - EDWARDS LAYUP [P]	2	44-44	0
14:51 - CLINE JUMPER	2	46-44	-2
		46-45	-1 1
			MCVEIGH FT - 14:30
14:02 - CLINE 3PTR	3	49-45	-4
		49-47	-2 2
			MCVEIGH LAYUP [P] - 13:14
		49-48	-1 1
			MCVEIGH FT - 13:14
12:55 - MATHIAS 3PTR	3	52-48	-4
		52-50	-2 2
			HORNE JUMPER [P] - 12:37
12:16 - THOMPSON 3PTR	3	55-50	-5
		55-51	-4 1
			MCVEIGH FT - 12:02
		55-52	-3 1
			MCVEIGH FT - 12:02
		55-53	-2 1
			MCVEIGH FT - 12:02
11:29 - SWANIGAN JUMPER [P]	2	57-53	-4
		57-54	-3 1
			TSHIMANGA FT - 11:09
10:57 - MATHIAS JUMPER	2	59-54	-5
09:47 - HAAS LAYUP [P]	2	61-54	-7
		61-56	-5 2
			HORNE DUNK [P] - 09:21
		61-57	-4 1
			WEBSTER FT - 08:32
		61-58	-3 1
			WEBSTER FT - 08:32
		61-60	-1 2
			HORNE JUMPER [P] - 07:48
07:29 - EDWARDS FT	1	62-60	-2
07:29 - EDWARDS FT	1	63-60	-3
		63-62	-1 2
			JACOBSON JUMPER - 06:58
		63-64	1 2
			JACOBSON LAYUP [P] - 06:01
		63-65	2 1
			JACOBSON FT - 06:00
05:49 - EDWARDS 3PTR	3	66-65	-1
		66-67	1 2
			TSHIMANGA JUMPER [P] - 05:19
05:02 - MATHIAS 3PTR	3	69-67	-2
03:09 - MATHIAS 3PTR	3	72-67	-5
		72-70	-2 3
			HORNE 3PTR - 02:43
02:24 - MATHIAS 3PTR	3	75-70	-5
		75-72	-3 2
			TSHIMANGA JUMPER [P] - 02:04
		75-73	-2 1
			TSHIMANGA FT - 02:04
01:50 - SWANIGAN FT	1	76-73	-3
		76-75	-1 2
			TAYLOR JUMPER [P] - 01:37
01:20 - SWANIGAN FT	1	77-75	-2
01:20 - SWANIGAN FT	1	78-75	-3
		78-76	-2 1
			WATSON JR. FT - 01:10
		78-77	-1 1
			WATSON JR. FT - 01:10
		78-79	1 2
			JACOBSON JUMPER [P] - 00:41

		78-80	2	1	MCVEIGH FT - 00:22
		78-81	3	1	WATSON JR. FT - 00:09
		78-82	4	1	WATSON JR. FT - 00:09
00:06 - MATHIAS FT	1	79-82	3		
00:06 - MATHIAS FT	1	80-82	2		
		80-83	3	1	MCVEIGH FT - 00:05

Purdue vs Nebraska
OFFICIAL SHOT CHART

1/29/2017 at Pinnacle Bank Arena (Lincoln, Neb.)

PERIOD 1



PURDUE PERIOD 1

FG Made	12
FG Attempted	34
3PFG Made	6
3PFG Attempted	13

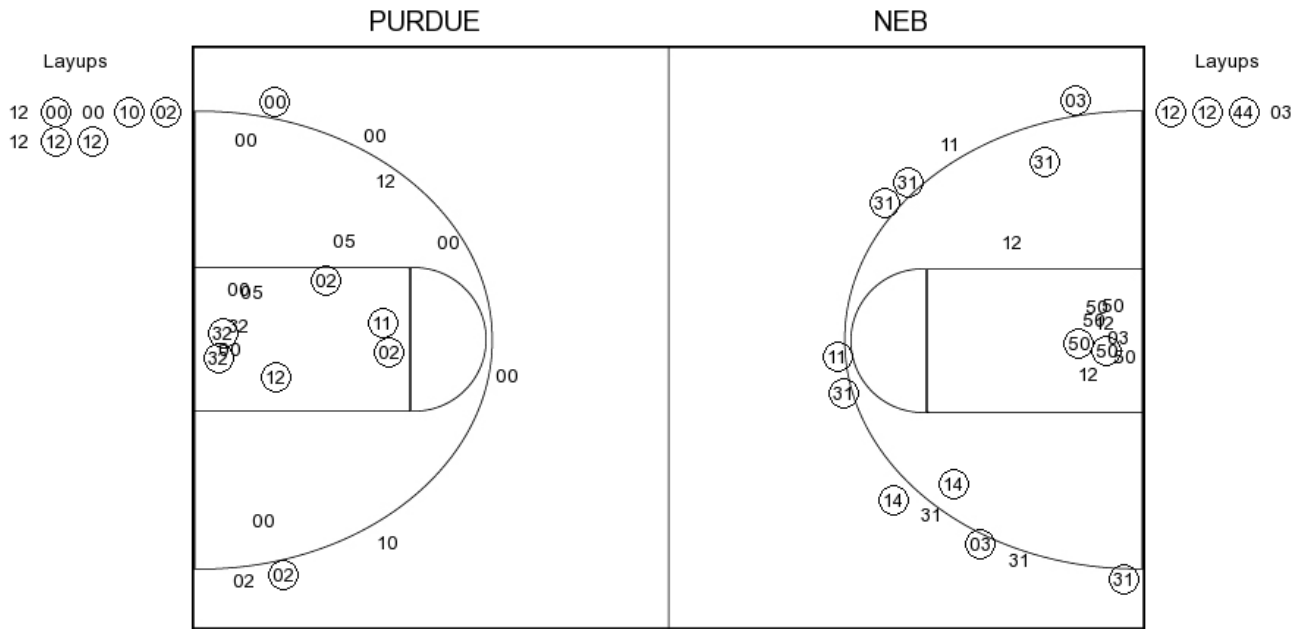
NEB PERIOD 1

FG Made	15
FG Attempted	36
3PFG Made	7
3PFG Attempted	11

Purdue vs Nebraska
OFFICIAL SHOT CHART

1/29/2017 at Pinnacle Bank Arena (Lincoln, Neb.)

PERIOD 2



PURDUE PERIOD 2

FG Made	15
FG Attempted	28
3PFG Made	8
3PFG Attempted	11

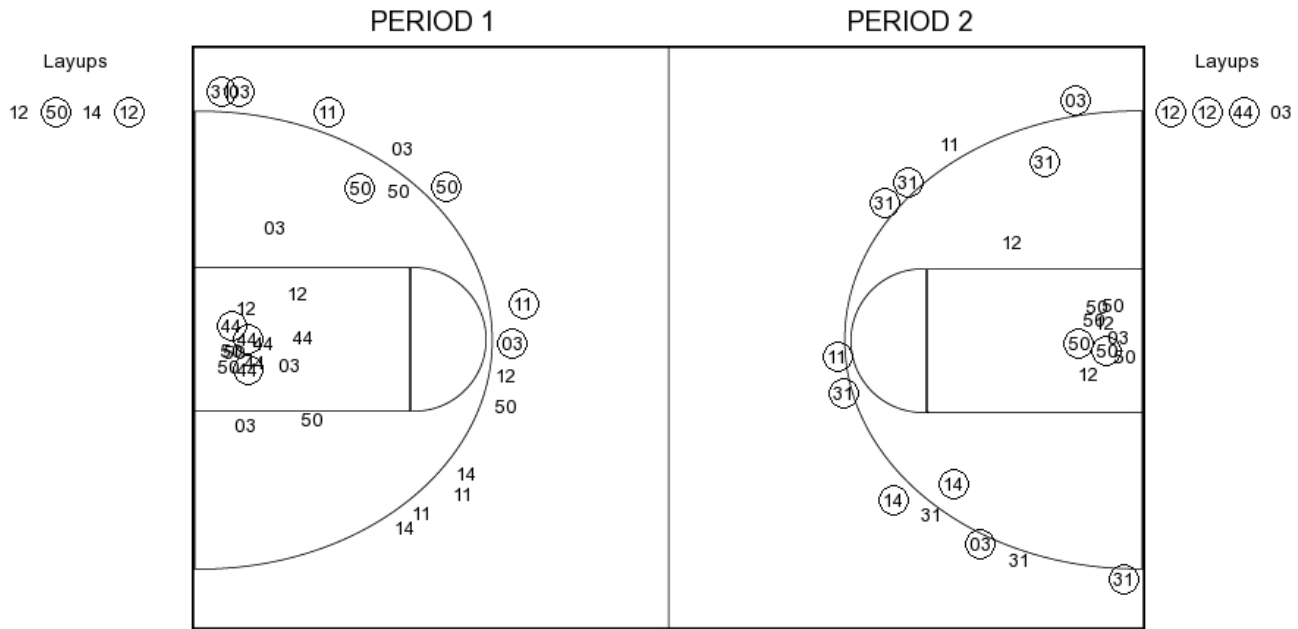
NEB PERIOD 2

FG Made	13
FG Attempted	29
3PFG Made	2
3PFG Attempted	6

Purdue vs Nebraska
OFFICIAL SHOT CHART

1/29/2017 at Pinnacle Bank Arena (Lincoln, Neb.)

Purdue



PURDUE PERIOD 1

FG Made	12
FG Attempted	34
3PFG Made	6
3PFG Attempted	13

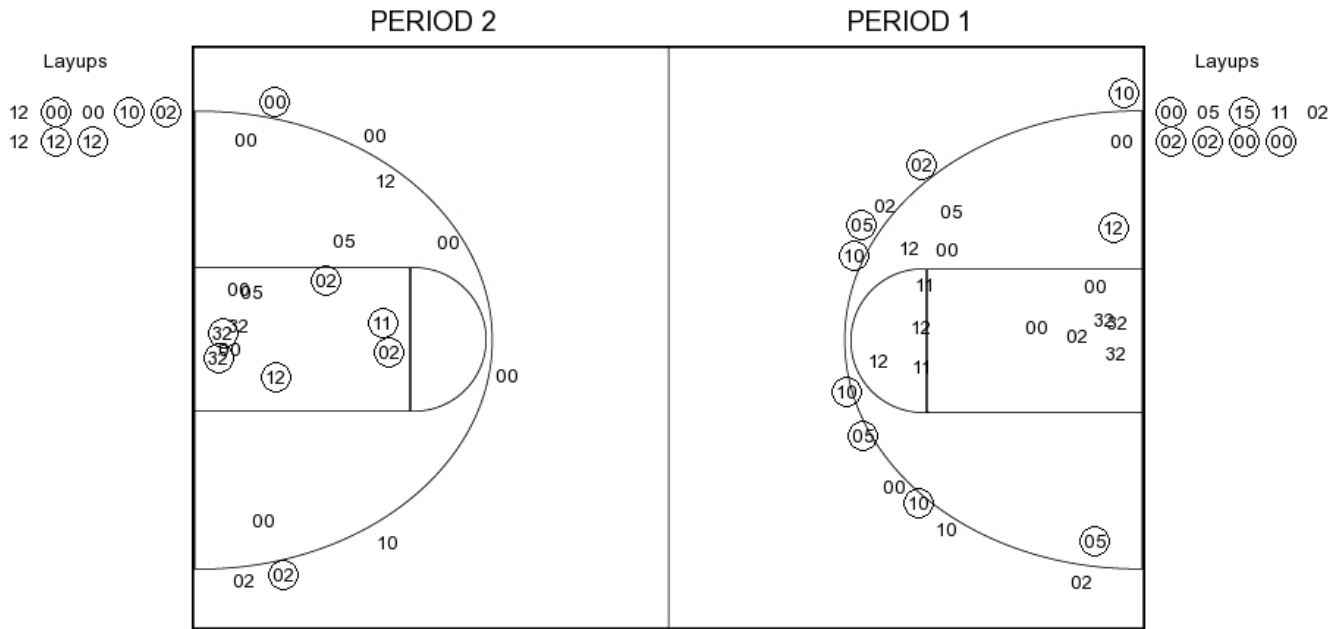
PURDUE PERIOD 2

FG Made	15
FG Attempted	28
3PFG Made	8
3PFG Attempted	11

Purdue vs Nebraska
OFFICIAL SHOT CHART

1/29/2017 at Pinnacle Bank Arena (Lincoln, Neb.)

Nebraska



NEB PERIOD 1

FG Made	15
FG Attempted	36
3PFG Made	7
3PFG Attempted	11

NEB PERIOD 2

FG Made	13
FG Attempted	29
3PFG Made	2
3PFG Attempted	6