

CURRENT SCORE



Maryland

60



Purdue

62

(23) Maryland at Purdue

December 07, 2018 • Mackey Arena (Keady Court) - Lafayette, IN

STATISTICS

Official Box Score
Maryland vs Purdue
Game Totals at 00:00 (2nd Period)
December 07, 2018 at Mackey Arena (Keady Court) - Lafayette, IN

Maryland 60

No.	Player	S	Pts	FG	3FG	FT	OR	DR	TR	PF	A	TO	Blk	Stl	Min	+/-
1	Cowan, Anthony		18	4-17	2-10	8-10	1	4	5	3	6	3	0	2	37	0
5	Ayala, Eric		2	1-4	0-2	0-0	0	1	1	1	0	3	0	1	29	-4
11	Morsell, Darryl		12	5-9	1-3	1-2	2	2	4	2	1	1	2	1	34	-2
23	Fernando, Bruno		9	3-7	1-1	2-2	3	10	13	2	1	4	2	1	33	-5
25	Smith, Jalen		7	3-8	1-2	0-0	5	4	9	3	1	0	1	0	23	0
0	Tomaic, Joshua		0	0-0	0-0	0-0	0	0	0	0	0	1	0	0	3	-5
2	Wiggins, Aaron		9	3-9	3-7	0-0	2	0	2	1	0	2	0	2	30	3
10	Smith Jr., Serrel		0	0-2	0-1	0-0	0	0	0	2	1	2	0	0	10	-1
14	Lindo Jr., Ricky		3	1-1	1-1	0-0	0	0	0	1	0	0	0	0	2	4
	Team						3	2	5	0		1				
TOTALS			60	20-57	9-27	11-14	16	23	39	15	10	17	5	7	200	

Shooting By Period

Period	FG	FG%	3FG	3FG%	FT	FT%
1st Half	12-29	41%	5-13	38%	5-6	83%
2nd Half	8-28	29%	4-14	29%	6-8	75%
Game	20-57	35.1%	9-27	33.3%	11-14	78.6%

Deadball Rebounds:

Last FG: 2nd-04:20
Biggest Run: 10-0
Largest lead: By 8 at 1-13:26
Technical Fouls: None.

Purdue 62

No.	Player	S	Pts	FG	3FG	FT	OR	DR	TR	PF	A	TO	Blk	Stl	Min	+/-
3	Edwards, Carsen		20	4-15	3-9	9-9	0	4	4	4	3	3	0	2	35	0
14	Cline, Ryan		4	1-7	0-6	2-2	0	3	3	3	4	2	0	0	35	1
20	Eastern, Nojel		4	2-5	0-1	0-0	2	2	4	2	2	2	2	1	32	10
24	Eifert, Grady		7	2-5	2-3	1-3	1	1	2	0	0	0	0	2	19	-1
32	Haarms, Matt		10	4-4	1-1	1-2	2	4	6	3	0	2	3	0	25	13
1	Wheeler, Aaron		15	6-7	3-4	0-0	1	2	3	1	0	2	2	1	21	3
2	Hunter Jr., Eric		0	0-1	0-0	0-0	0	2	2	1	2	1	0	0	8	-3
12	Boudreaux, Evan		2	1-3	0-0	0-0	1	0	1	0	0	2	0	0	14	-11
50	Williams, Trevion		0	0-0	0-0	0-0	0	0	0	0	0	0	0	0	1	0
55	Stefanovic, Sasha		0	0-3	0-2	0-0	0	0	0	1	0	2	0	2	11	-2
	Team						2	2	4	0		0				
TOTALS			62	20-50	9-26	13-16	9	20	29	15	11	16	7	8	200	

Shooting By Period

Period	FG	FG%	3FG	3FG%	FT	FT%
1st Half	10-28	36%	4-15	27%	6-7	86%
2nd Half	10-22	45%	5-11	45%	7-9	78%
Game	20-50	40.0%	9-26	34.6%	13-16	81.3%

Deadball Rebounds:

Last FG: 2nd-05:18
Biggest Run: 7-0
Largest lead: By 5 at 2-05:18
Technical Fouls: None.

Game Notes:
 Officials: **BO BOROSKI, TERRY UGLESBY, BRIAN DORSEY**
 Attendance: *Not Counted Yet*
 Start Time: **12:00 AM**
 Conference Game;

Score by Period	1st	2nd	TOT
UMD	34	26	60
PUR	30	32	62

UMD led for 26:02. PUR led for 9:58.
 Game was tied for 3:58.
 Times tied: 12 Lead Changes: 7

Points from	UMD	PUR
In the Paint	16	16
Off Turns	12	16
2nd Chance	9	10
Fast Break	13	9
Bench	12	17

Official Box Score
Maryland vs Purdue
First Half Statistics Only
December 07, 2018 at Mackey Arena (Keady Court) - Lafayette, IN

Maryland 60

No.	Player	S	Pts	FG	3FG	FT	OR	DR	TR	PF	A	TO	Blk	Stl	Min	+/-
1	Cowan, Anthony		5	1-7	0-3	3-4	0	4	4	1	4	1	0	1	18	7
5	Ayala, Eric		2	1-3	0-1	0-0	0	1	1	0	0	1	0	0	17	2
11	Morsell, Darryl		7	3-4	1-2	0-0	0	2	2	1	0	1	1	1	16	3
23	Fernando, Bruno		6	2-3	0-0	2-2	1	5	6	1	0	2	1	0	14	1
25	Smith, Jalen		5	2-4	1-1	0-0	3	0	3	1	0	0	1	0	9	4
0	Tomaic, Joshua		0	0-0	0-0	0-0	0	0	0	0	0	1	0	0	3	-5
2	Wiggins, Aaron		6	2-5	2-4	0-0	2	0	2	0	0	1	0	2	15	5
10	Smith Jr., Serrel		0	0-2	0-1	0-0	0	0	0	1	1	2	0	0	5	-1
14	Lindo Jr., Ricky		3	1-1	1-1	0-0	0	0	0	1	0	0	0	0	2	4
	Team						1	0	1	0		0				
TOTALS			34	12-29	5-13	5-6	0	0	19	6	5	9	3	4	100	

Shooting By Period

Period	FG	FG%	3FG	3FG%	FT	FT%
1st Half	12-29	41%	5-13	38%	5-6	83%
2nd Half	8-28	29%	4-14	29%	6-8	75%
Game	20-57	35.1%	9-27	33.3%	11-14	78.6%

Deadball Rebounds:
Last FG: 2nd-04:20
Biggest Run: 10-0
Largest lead: By 8 at 1-13:26
Technical Fouls: None.

Purdue 62

No.	Player	S	Pts	FG	3FG	FT	OR	DR	TR	PF	A	TO	Blk	Stl	Min	+/-
3	Edwards, Carsen		10	2-7	1-4	5-5	0	2	2	2	0	2	0	0	17	-7
14	Cline, Ryan		0	0-3	0-3	0-0	0	1	1	1	2	1	0	0	18	-5
20	Eastern, Nojel		4	2-5	0-1	0-0	2	0	2	0	1	0	1	1	16	2
24	Eifert, Grady		3	1-3	1-2	0-0	0	0	0	0	0	0	0	0	9	-3
32	Haarms, Matt		5	2-2	0-0	1-2	1	3	4	2	0	2	2	0	9	5
1	Wheeler, Aaron		8	3-4	2-3	0-0	1	2	3	1	0	1	1	0	11	-1
2	Hunter Jr., Eric		0	0-1	0-0	0-0	0	1	1	1	1	0	0	0	4	-4
12	Boudreaux, Evan		0	0-1	0-0	0-0	1	0	1	0	0	2	0	0	10	-9
50	Williams, Trevion		0	0-0	0-0	0-0	0	0	0	0	0	0	0	0	1	0
55	Stefanovic, Sasha		0	0-2	0-2	0-0	0	0	0	0	0	2	0	0	5	2
	Team						1	1	2	0		0				
TOTALS			30	10-28	4-15	6-7	0	0	16	7	4	10	4	1	100	

Shooting By Period

Period	FG	FG%	3FG	3FG%	FT	FT%
1st Half	10-28	36%	4-15	27%	6-7	86%
2nd Half	10-22	45%	5-11	45%	7-9	78%
Game	20-50	40.0%	9-26	34.6%	13-16	81.3%

Deadball Rebounds:
Last FG: 2nd-05:18
Biggest Run: 7-0
Largest lead: By 5 at 2-05:18
Technical Fouls: None.

Game Notes:
 Officials: **BO BOROSKI, TERRY UGLESBY, BRIAN DORSEY**
 Attendance: *Not Counted Yet*
 Start Time: **12:00 AM**
 Conference Game;

Score by Period	1st	2nd	TOT
UMD	34	26	60
PUR	30	32	62

This period only:UMD led for 26:02. PUR led for 26:57.
Game was tied for 0:58.

Points from (This Period)	UMD	PUR
In the Paint	12	6
Off Turns	9	11
2nd Chance	6	4
Fast Break	7	3
Bench	9	8

**Official Play-By-Play
Maryland vs Purdue
First Half**

December 07, 2018 at Mackey Arena (Keady Court) - Lafayette, IN

Starters:

Maryland: 1 COWAN,ANTHONY; 5 AYALA,ERIC; 11 MORSELL,DARRYL; 23 FERNANDO,BRUNO; 25 SMITH,JALEN;

Purdue: 3 EDWARDS,CARSEN; 14 CLINE,RYAN; 20 EASTERN,NOJEL; 24 EIFERT,GRADY; 32 HAARMS,MATT;

Period 1

Time	VISITORS: Maryland	Score	Margin	HOME: Purdue
19:29				MISSED JUMPER by EASTERN,NOJEL
19:25				REBOUND (OFF) by EASTERN,NOJEL
19:24				MISSED 3PTR by EDWARDS,CARSEN
19:20	REBOUND (DEF) by AYALA,ERIC			
19:00	GOOD! JUMPER by MORSELL,DARRYL	0-2	V 2	
18:50		3-2	H 1	GOOD! 3PTR by EIFERT,GRADY
18:50				ASSIST by CLINE,RYAN
18:24	GOOD! 3PTR by SMITH,JALEN	3-5	V 2	
18:24	ASSIST by COWAN,ANTHONY			
18:02		5-5	T	GOOD! JUMPER by HAARMS,MATT
17:31	TURNOVER (BADPASS) by MORSELL,DARRYL			
17:31				STEAL by EASTERN,NOJEL
17:24		7-5	H 2	GOOD! LAYUP by EASTERN,NOJEL [FB]
17:06	MISSED 3PTR by AYALA,ERIC			
17:02	REBOUND (OFF) by SMITH,JALEN			
17:01	MISSED JUMPER by SMITH,JALEN			
16:57				REBOUND (DEF) by HAARMS,MATT
16:55				MISSED 3PTR by CLINE,RYAN
16:51	REBOUND (DEF) by MORSELL,DARRYL			
16:44	MISSED JUMPER by COWAN,ANTHONY			
16:44				BLOCK by HAARMS,MATT
16:37				REBOUND (DEF) by CLINE,RYAN
16:34	FOUL (PERSONAL) by SMITH,JALEN			
16:34				MISSED FT by HAARMS,MATT
16:34				REBOUND (OFF) by TEAM
16:34				SUB OUT: EASTERN,NOJEL
16:34				SUB IN: HUNTER JR.,ERIC
16:34	SUB OUT: SMITH,JALEN			
16:34	SUB IN: WIGGINS,AARON			
16:34		8-5	H 3	GOOD! FT by HAARMS,MATT [FB]
16:16	GOOD! JUMPER by COWAN,ANTHONY [PNT]	8-7	H 1	
16:02				MISSED JUMPER by EIFERT,GRADY
15:59	REBOUND (DEF) by FERNANDO,BRUNO			
15:52				
15:52				SUB OUT: HAARMS,MATT
15:52				SUB IN: BOUDREAU,EVAN
15:40	GOOD! LAYUP by FERNANDO,BRUNO [PNT]	8-9	V 1	
15:18				TURNOVER (OTHER) by EDWARDS,CARSEN
14:59	GOOD! 3PTR by MORSELL,DARRYL	8-12	V 4	
14:39				TURNOVER (3SEC) by BOUDREAU,EVAN
14:39				SUB OUT: EIFERT,GRADY
14:39				SUB IN: WHEELER,AARON
14:39				SUB OUT: HUNTER JR.,ERIC
14:39				SUB IN: EASTERN,NOJEL
14:20	MISSED JUMPER by FERNANDO,BRUNO			
14:16	REBOUND (OFF) by WIGGINS,AARON			
14:07	MISSED JUMPER by COWAN,ANTHONY			
14:03				REBOUND (DEF) by EDWARDS,CARSEN
14:01				MISSED LAYUP by EDWARDS,CARSEN
14:01	BLOCK by MORSELL,DARRYL			
14:00				REBOUND (OFF) by TEAM
14:00	SUB OUT: MORSELL,DARRYL			
14:00	SUB IN: SMITH,JALEN			
14:00	SUB OUT: FERNANDO,BRUNO			
14:00	SUB IN: LINDO JR.,RICKY			
13:55				MISSED 3PTR by CLINE,RYAN
13:51				REBOUND (OFF) by BOUDREAU,EVAN
13:50				TURNOVER (LOSTBALL) by BOUDREAU,EVAN
13:50	STEAL by COWAN,ANTHONY			
13:42	GOOD! 3PTR by WIGGINS,AARON	8-15	V 7	
13:27	FOUL (PERSONAL) by LINDO JR.,RICKY			
13:27	SUB OUT: AYALA,ERIC			
13:27	SUB IN: SMITH JR.,SERREL			
13:26				MISSED LAYUP by EDWARDS,CARSEN
13:26				REBOUND (OFF) by WHEELER,AARON
13:26		10-15	V 5	GOOD! DUNK by WHEELER,AARON
13:26	GOOD! 3PTR by LINDO JR.,RICKY	10-18	V 8	
13:26	ASSIST by SMITH JR.,SERREL			
13:24				FOUL (OFF) by EDWARDS,CARSEN
13:24				TURNOVER (OFFENSIVE) by EDWARDS,CARSEN
12:41				SUB OUT: EDWARDS,CARSEN
12:41				SUB IN: STEFANOVIC,SASHA
12:41				SUB OUT: BOUDREAU,EVAN
12:41				SUB IN: HAARMS,MATT
12:18	MISSED LAYUP by SMITH,JALEN			
12:18				REBOUND (DEF) by HAARMS,MATT

Time	VISITORS: Maryland	Score	Margin	HOME: Purdue
12:18				BLOCK by HAARMS,MATT
12:06				MISSED 3PTR by STEFANOVIC,SASHA
12:02	REBOUND (DEF) by COWAN,ANTHONY			
12:02	TURNOVER (LOSTBALL) by WIGGINS,AARON			
12:02	SUB OUT: COWAN,ANTHONY			
12:02	SUB IN: TOMAIC,JOSHUA			
12:02	SUB OUT: LINDO JR.,RICKY			
12:02	SUB IN: SMITH JR.,SERREL			
11:53				TURNOVER (TRAVEL) by HAARMS,MATT
11:53				
11:53	SUB OUT: SMITH,JALEN			
11:53	SUB IN: FERNANDO,BRUNO			
11:53	SUB IN: AYALA,ERIC			
11:41	TURNOVER (LOSTBALL) by SMITH JR.,SERREL			
11:22				MISSED JUMPER by EASTERN,NOJEL
11:22	BLOCK by FERNANDO,BRUNO			
11:17	REBOUND (DEF) by FERNANDO,BRUNO			
11:09	MISSED 3PTR by SMITH JR.,SERREL			
11:03				REBOUND (DEF) by WHEELER,AARON
10:40		13-18	V 5	GOOD! 3PTR by WHEELER,AARON
10:40				ASSIST by CLINE,RYAN
10:09	TURNOVER (TRAVEL) by TOMAIC,JOSHUA			
10:09				SUB OUT: CLINE,RYAN
10:09				SUB IN: EDWARDS,CARSEN
10:09	SUB OUT: SMITH JR.,SERREL			
10:09	SUB IN: COWAN,ANTHONY			
10:09	SUB OUT: TOMAIC,JOSHUA			
10:09	SUB IN: MORSELL,DARRYL			
09:46		15-18	V 3	GOOD! JUMPER by HAARMS,MATT
09:21	MISSED LAYUP by WIGGINS,AARON			
09:21				BLOCK by WHEELER,AARON
09:16				REBOUND (DEF) by HAARMS,MATT
09:15				TURNOVER (BADPASS) by STEFANOVIC,SASHA
09:15	STEAL by MORSELL,DARRYL			
09:09	MISSED 3PTR by WIGGINS,AARON			
09:06	REBOUND (OFF) by TEAM			
09:06	SUB OUT: WIGGINS,AARON			
09:06	SUB IN: SMITH,JALEN			
09:04	MISSED 3PTR by COWAN,ANTHONY			
09:01				REBOUND (DEF) by EDWARDS,CARSEN
08:56				MISSED 3PTR by STEFANOVIC,SASHA
08:51				REBOUND (OFF) by HAARMS,MATT
08:40				MISSED 3PTR by EDWARDS,CARSEN
08:37	REBOUND (DEF) by FERNANDO,BRUNO			
08:37				FOUL (PERSONAL) by HAARMS,MATT
08:30				SUB OUT: EASTERN,NOJEL
08:30				SUB IN: BOUDREAU,EVAN
08:30				SUB OUT: HAARMS,MATT
08:30				SUB IN: HUNTER JR.,ERIC
08:15				FOUL (PERSONAL) by HUNTER JR.,ERIC
08:15	GOOD! FT by COWAN,ANTHONY	15-19	V 4	
08:15				SUB OUT: STEFANOVIC,SASHA
08:15				SUB IN: CLINE,RYAN
08:15	MISSED FT by COWAN,ANTHONY			
08:15	REBOUND (OFF) by SMITH,JALEN			
08:09				SUB OUT: WHEELER,AARON
08:09				SUB IN: EIFERT,GRADY
07:56	FOUL (OFF) by FERNANDO,BRUNO			
07:56	TURNOVER (OFFENSIVE) by FERNANDO,BRUNO			
07:56				
07:56	SUB OUT: FERNANDO,BRUNO			
07:56	SUB IN: WIGGINS,AARON			
07:38		18-19	V 1	GOOD! 3PTR by EDWARDS,CARSEN
07:38				ASSIST by HUNTER JR.,ERIC
07:14	MISSED 3PTR by WIGGINS,AARON			
07:10				REBOUND (DEF) by HUNTER JR.,ERIC
07:05				MISSED JUMPER by HUNTER JR.,ERIC
07:05	BLOCK by SMITH,JALEN			
07:01	REBOUND (DEF) by MORSELL,DARRYL			
06:58	MISSED LAYUP by COWAN,ANTHONY			
06:52	REBOUND (OFF) by SMITH,JALEN			
06:52	GOOD! LAYUP by SMITH,JALEN	18-21	V 3	
06:40	FOUL (PERSONAL) by COWAN,ANTHONY			
06:40		19-21	V 2	GOOD! FT by EDWARDS,CARSEN
06:40		20-21	V 1	GOOD! FT by EDWARDS,CARSEN
06:40				SUB OUT: HUNTER JR.,ERIC
06:40				SUB IN: EASTERN,NOJEL
06:40		21-21	T	GOOD! FT by EDWARDS,CARSEN
06:29	MISSED 3PTR by MORSELL,DARRYL			
06:24	REBOUND (OFF) by WIGGINS,AARON			
06:22	GOOD! LAYUP by AYALA,ERIC [PNT]	21-23	V 2	
06:07				MISSED JUMPER by BOUDREAU,EVAN
06:02	REBOUND (DEF) by COWAN,ANTHONY			
05:58	GOOD! LAYUP by MORSELL,DARRYL [FB]	21-25	V 4	
05:58	ASSIST by COWAN,ANTHONY			
05:43				MISSED 3PTR by EIFERT,GRADY
05:38	REBOUND (DEF) by COWAN,ANTHONY			

Time	VISITORS: Maryland	Score	Margin	HOME: Purdue
05:32	TURNOVER (TRAVEL) by AYALA,ERIC			
05:32	SUB OUT: SMITH,JALEN			
05:32	SUB IN: FERNANDO,BRUNO			
05:23				MISSED 3PTR by CLINE,RYAN
05:15				REBOUND (OFF) by EASTERN,NOJEL
05:15		23-25	V 2	GOOD! LAYUP by EASTERN,NOJEL
05:03	MISSED 3PTR by COWAN,ANTHONY			
05:00	REBOUND (OFF) by FERNANDO,BRUNO			
04:59				FOUL (PERSONAL) by CLINE,RYAN
04:59	GOOD! FT by FERNANDO,BRUNO	23-26	V 3	
04:59				SUB OUT: BOUDREAUX,EVAN
04:59				SUB IN: HAARMS,MATT
04:59				SUB OUT: EIFERT,GRADY
04:59				SUB IN: WHEELER,AARON
04:59	GOOD! FT by FERNANDO,BRUNO	23-27	V 4	
04:41		25-27	V 2	
04:24	GOOD! DUNK by FERNANDO,BRUNO	25-29	V 4	GOOD! JUMPER by EDWARDS,CARSEN
04:24	ASSIST by COWAN,ANTHONY			
04:09				FOUL (OFF) by HAARMS,MATT
04:09				TURNOVER (OFFENSIVE) by HAARMS,MATT
04:09				SUB OUT: HAARMS,MATT
04:09				SUB IN: BOUDREAUX,EVAN
04:09	SUB OUT: AYALA,ERIC			
04:09	SUB IN: SMITH JR.,SERREL			
03:57	TURNOVER (BADPASS) by COWAN,ANTHONY			
03:57				
03:48	FOUL (PERSONAL) by MORSELL,DARRYL			
03:48		26-29	V 3	GOOD! FT by EDWARDS,CARSEN
03:48		27-29	V 2	GOOD! FT by EDWARDS,CARSEN
03:20	MISSED JUMPER by SMITH JR.,SERREL			
03:16				REBOUND (DEF) by TEAM
03:06				TURNOVER (BADPASS) by CLINE,RYAN
03:06	STEAL by WIGGINS,AARON			
03:01	GOOD! 3PTR by WIGGINS,AARON [FB]	27-32	V 5	
03:01	ASSIST by COWAN,ANTHONY			
02:43				TURNOVER (TRAVEL) by WHEELER,AARON
02:27				FOUL (PERSONAL) by EDWARDS,CARSEN
02:27				SUB OUT: EDWARDS,CARSEN
02:27				SUB IN: STEFANOVIC,SASHA
02:22	FOUL (OFF) by SMITH JR.,SERREL			
02:22	TURNOVER (OFFENSIVE) by SMITH JR.,SERREL			
02:22				SUB OUT: BOUDREAUX,EVAN
02:22				SUB IN: EDWARDS,CARSEN
02:22				SUB OUT: STEFANOVIC,SASHA
02:22				SUB IN: WILLIAMS,TREVION
02:22	SUB OUT: SMITH JR.,SERREL			
02:22	SUB IN: AYALA,ERIC			
02:06				MISSED 3PTR by EASTERN,NOJEL
02:03	REBOUND (DEF) by FERNANDO,BRUNO			
01:58	MISSED LAYUP by AYALA,ERIC			
01:54				REBOUND (DEF) by WHEELER,AARON
01:39				MISSED 3PTR by WHEELER,AARON
01:36	REBOUND (DEF) by FERNANDO,BRUNO			
01:22	TURNOVER (3SEC) by FERNANDO,BRUNO			
01:22				SUB OUT: EASTERN,NOJEL
01:22				SUB IN: STEFANOVIC,SASHA
01:22				SUB OUT: WILLIAMS,TREVION
01:22				SUB IN: BOUDREAUX,EVAN
01:22	SUB OUT: FERNANDO,BRUNO			
01:22	SUB IN: SMITH,JALEN			
01:12				MISSED 3PTR by EDWARDS,CARSEN
01:08	REBOUND (DEF) by COWAN,ANTHONY			
01:03				FOUL (PERSONAL) by WHEELER,AARON
01:03	GOOD! FT by COWAN,ANTHONY [FB]	27-33	V 6	
01:03	SUB OUT: SMITH,JALEN			
01:03	SUB IN: TOMAIC,JOSHUA			
01:03	GOOD! FT by COWAN,ANTHONY [FB]	27-34	V 7	
00:55				TURNOVER (BADPASS) by STEFANOVIC,SASHA
00:55	STEAL by WIGGINS,AARON			
00:45	TIMEOUT 30SEC			
00:45				SUB OUT: EDWARDS,CARSEN
00:45				SUB IN: EASTERN,NOJEL
00:26	MISSED 3PTR by COWAN,ANTHONY			
00:26				BLOCK by EASTERN,NOJEL
00:23				REBOUND (DEF) by TEAM
00:23				SUB OUT: STEFANOVIC,SASHA
00:23				SUB IN: EDWARDS,CARSEN
00:06		30-34	V 4	GOOD! 3PTR by WHEELER,AARON
00:06				ASSIST by EASTERN,NOJEL

Maryland 34, Purdue 30

Points from (This Period)	UMD	PUR
In the Paint	12	6
Off Turns	9	11
2nd Chance	6	4
Fast Break	7	3
Bench	9	8

**This period only:UMD led for 26:02. PUR led for 26:57.
Game was tied for 0:58.**

Official Box Score
Maryland vs Purdue
Second Half Statistics Only
December 07, 2018 at Mackey Arena (Keady Court) - Lafayette, IN

Maryland 60

No.	Player	S	Pts	FG	3FG	FT	OR	DR	TR	PF	A	TO	Blk	Stl	Min	+/-
1	Cowan, Anthony		13	3-10	2-7	5-6	1	0	1	2	2	2	0	1	18	-7
5	Ayala, Eric		0	0-1	0-1	0-0	0	0	0	1	0	2	0	1	12	-6
11	Morsell, Darryl		5	2-5	0-1	1-2	2	0	2	1	1	0	1	0	17	-5
23	Fernando, Bruno		3	1-4	1-1	0-0	2	5	7	1	1	2	1	1	19	-6
25	Smith, Jalen		2	1-4	0-1	0-0	2	4	6	2	1	0	0	0	13	-4
0	Tomaic, Joshua		0	0-0	0-0	0-0	0	0	0	0	0	0	0	0	0	0
2	Wiggins, Aaron		3	1-4	1-3	0-0	0	0	0	1	0	1	0	0	15	-2
10	Smith Jr., Serrel		0	0-0	0-0	0-0	0	0	0	1	0	0	0	0	5	0
14	Lindo Jr., Ricky		0	0-0	0-0	0-0	0	0	0	0	0	0	0	0	0	0
	Team						2	2	4	0		1				
TOTALS			26	8-28	4-14	6-8	0	0	20	9	5	8	2	3	100	

Shooting By Period

Period	FG	FG%	3FG	3FG%	FT	FT%
1st Half	12-29	41%	5-13	38%	5-6	83%
2nd Half	8-28	29%	4-14	29%	6-8	75%
Game	20-57	35.1%	9-27	33.3%	11-14	78.6%

Deadball Rebounds:

Last FG: 2nd-04:20
 Biggest Run: 10-0
 Largest lead: By 8 at 1-13:26
 Technical Fouls: None.

Purdue 62

No.	Player	S	Pts	FG	3FG	FT	OR	DR	TR	PF	A	TO	Blk	Stl	Min	+/-
3	Edwards, Carsen		10	2-8	2-5	4-4	0	2	2	2	3	1	0	2	18	7
14	Cline, Ryan		4	1-4	0-3	2-2	0	2	2	2	2	1	0	0	17	6
20	Eastern, Nojel		0	0-0	0-0	0-0	0	2	2	2	1	2	1	0	16	8
24	Eifert, Grady		4	1-2	1-1	1-3	1	1	2	0	0	0	0	2	10	2
32	Haarms, Matt		5	2-2	1-1	0-0	1	1	2	1	0	0	1	0	16	8
1	Wheeler, Aaron		7	3-3	1-1	0-0	0	0	0	0	0	1	1	1	10	4
2	Hunter Jr., Eric		0	0-0	0-0	0-0	0	1	1	0	1	1	0	0	4	1
12	Boudreaux, Evan		2	1-2	0-0	0-0	0	0	0	0	0	0	0	0	4	-2
50	Williams, Trevion		0	0-0	0-0	0-0	0	0	0	0	0	0	0	0	0	0
55	Stefanovic, Sasha		0	0-1	0-0	0-0	0	0	0	1	0	0	0	2	5	-4
	Team						1	1	2	0		0				
TOTALS			32	10-22	5-11	7-9	0	0	13	8	7	6	3	7	100	

Shooting By Period

Period	FG	FG%	3FG	3FG%	FT	FT%
1st Half	10-28	36%	4-15	27%	6-7	86%
2nd Half	10-22	45%	5-11	45%	7-9	78%
Game	20-50	40.0%	9-26	34.6%	13-16	81.3%

Deadball Rebounds:

Last FG: 2nd-05:18
 Biggest Run: 7-0
 Largest lead: By 5 at 2-05:18
 Technical Fouls: None.

Game Notes:
 Officials: **BO BOROSKI, TERRY UGLESBY, BRIAN DORSEY**
 Attendance: *Not Counted Yet*
 Start Time: **12:00 AM**
 Conference Game:

Score by Period	1st	2nd	TOT
UMD	34	26	60
PUR	30	32	62

This period only: UMD led for 26:02. PUR led for 26:57.
Game was tied for 0:58.

Points from (This Period)	UMD	PUR
In the Paint	4	10
Off Turns	3	5
2nd Chance	3	6
Fast Break	6	6
Bench	3	9

Official Play-By-Play
Maryland vs Purdue
Second Half
December 07, 2018 at Mackey Arena (Keady Court) - Lafayette, IN

Starters:

Maryland: 1 COWAN,ANTHONY; 5 AYALA,ERIC; 11 MORSELL,DARRYL; 23 FERNANDO,BRUNO; 25 SMITH,JALEN;

Purdue: 3 EDWARDS,CARSEN; 14 CLINE,RYAN; 20 EASTERN,NOJEL; 24 EIFERT,GRADY; 32 HAARMS,MATT;

Period 2

Time	VISITORS: Maryland	Score	Margin	HOME: Purdue
19:38				TURNOVER (DRIBBLING) by EASTERN,NOJEL
19:24	MISSED 3PTR by AYALA,ERIC			
19:20				REBOUND (DEF) by EASTERN,NOJEL
19:08		33-34	V 1	GOOD! 3PTR by EDWARDS,CARSEN
18:43	MISSED JUMPER by COWAN,ANTHONY			
18:40	REBOUND (OFF) by FERNANDO,BRUNO			
18:39				SUB OUT: EASTERN,NOJEL
18:39				SUB IN: HUNTER JR.,ERIC
18:32	MISSED JUMPER by MORSELL,DARRYL			
18:28				REBOUND (DEF) by EDWARDS,CARSEN
18:11				MISSED 3PTR by EDWARDS,CARSEN
18:07	REBOUND (DEF) by SMITH,JALEN			
17:43	GOOD! LAYUP by MORSELL,DARRYL	33-36	V 3	
17:43	ASSIST by SMITH,JALEN			
17:22	FOUL (PERSONAL) by AYALA,ERIC			
17:22		34-36	V 2	GOOD! FT by CLINE,RYAN
17:22		35-36	V 1	GOOD! FT by CLINE,RYAN
17:02	MISSED 3PTR by SMITH,JALEN			
16:57				REBOUND (DEF) by HAARMS,MATT
16:48				MISSED LAYUP by EIFERT,GRADY
16:48	BLOCK by FERNANDO,BRUNO			
16:44	REBOUND (DEF) by FERNANDO,BRUNO			
16:42	GOOD! DUNK by MORSELL,DARRYL [FB]	35-38	V 3	
16:42	ASSIST by COWAN,ANTHONY			
16:19				MISSED 3PTR by CLINE,RYAN
16:16	REBOUND (DEF) by FERNANDO,BRUNO			
16:07	GOOD! 3PTR by FERNANDO,BRUNO	35-41	V 6	
15:43				MISSED JUMPER by EDWARDS,CARSEN
15:40				REBOUND (OFF) by HAARMS,MATT
15:34		38-41	V 3	GOOD! 3PTR by HAARMS,MATT
15:34				ASSIST by EDWARDS,CARSEN
15:15	TURNOVER (BADPASS) by FERNANDO,BRUNO			
15:15				STEAL by EIFERT,GRADY
15:06		41-41	T	GOOD! 3PTR by EIFERT,GRADY
15:06				ASSIST by HUNTER JR.,ERIC
14:52	MISSED 3PTR by COWAN,ANTHONY			
14:47				REBOUND (DEF) by HUNTER JR.,ERIC
14:42				TURNOVER (LOSTBALL) by HUNTER JR.,ERIC
14:42	STEAL by COWAN,ANTHONY			
14:37				FOUL (PERSONAL) by EDWARDS,CARSEN
14:37				
14:37				SUB OUT: HUNTER JR.,ERIC
14:37				SUB IN: EASTERN,NOJEL
14:37				SUB OUT: HAARMS,MATT
14:37				SUB IN: BOUDREAUX,EVAN
14:37	SUB OUT: SMITH,JALEN			
14:37	SUB IN: WIGGINS,AARON			
14:37	GOOD! FT by COWAN,ANTHONY [FB]	41-42	V 1	
14:37	GOOD! FT by COWAN,ANTHONY [FB]	41-43	V 2	
14:22		43-43	T	GOOD! JUMPER by BOUDREAUX,EVAN [PNT]
14:22				ASSIST by CLINE,RYAN
13:50	GOOD! 3PTR by COWAN,ANTHONY	43-46	V 3	
13:29		45-46	V 1	GOOD! JUMPER by CLINE,RYAN [PNT]
13:09	TURNOVER (BADPASS) by AYALA,ERIC			
13:09				STEAL by EIFERT,GRADY
13:04				TURNOVER (BADPASS) by EASTERN,NOJEL
13:04	STEAL by AYALA,ERIC			
13:04				SUB OUT: EIFERT,GRADY
13:04				SUB IN: WHEELER,AARON
12:50	MISSED 3PTR by MORSELL,DARRYL			
12:45	REBOUND (OFF) by FERNANDO,BRUNO			
12:44	MISSED LAYUP by FERNANDO,BRUNO			
12:44				BLOCK by WHEELER,AARON
12:41	REBOUND (OFF) by TEAM			
12:41				SUB OUT: EDWARDS,CARSEN
12:41				SUB IN: STEFANOVIC,SASHA
12:41	SUB OUT: AYALA,ERIC			
12:41	SUB IN: SMITH JR.,SERREL			
12:41	SUB OUT: FERNANDO,BRUNO			
12:41	SUB IN: SMITH,JALEN			
12:27				FOUL (PERSONAL) by STEFANOVIC,SASHA
12:21	TURNOVER (BADPASS) by COWAN,ANTHONY			
12:21				STEAL by STEFANOVIC,SASHA
12:17				MISSED LAYUP by STEFANOVIC,SASHA
12:13	REBOUND (DEF) by TEAM			
11:52	MISSED 3PTR by COWAN,ANTHONY			

Time	VISITORS: Maryland	Score	Margin	HOME: Purdue
11:49				REBOUND (DEF) by TEAM
11:49				
11:49	SUB OUT: COWAN,ANTHONY			
11:49	SUB IN: FERNANDO,BRUNO			
11:49	SUB OUT: MORSELL,DARRYL			
11:49	SUB IN: AYALA,ERIC			
11:39		47-46	H 1	GOOD! LAYUP by WHEELER,AARON
11:39				ASSIST by CLINE,RYAN
11:18	TURNOVER (BADPASS) by AYALA,ERIC			
11:18				STEAL by STEFANOVIC,SASHA
11:18	FOUL (PERSONAL) by SMITH JR.,SERREL			
11:07				MISSED JUMPER by BOUDREAUX,EVAN
11:03	REBOUND (DEF) by FERNANDO,BRUNO			
10:44	GOOD! 3PTR by WIGGINS,AARON	47-49	V 2	
10:44	ASSIST by FERNANDO,BRUNO			
10:19				MISSED 3PTR by CLINE,RYAN
10:17	REBOUND (DEF) by TEAM			
10:17				SUB OUT: CLINE,RYAN
10:17				SUB IN: EDWARDS,CARSEN
10:17	SUB OUT: AYALA,ERIC			
10:17	SUB IN: COWAN,ANTHONY			
10:17				SUB OUT: BOUDREAUX,EVAN
10:17				SUB IN: HAARMS,MATT
09:54	MISSED JUMPER by SMITH,JALEN			
09:54				BLOCK by HAARMS,MATT
09:45	REBOUND (OFF) by SMITH,JALEN			
09:40	MISSED JUMPER by WIGGINS,AARON			
09:40	REBOUND (OFF) by SMITH,JALEN			
09:32	MISSED 3PTR by COWAN,ANTHONY			
09:28				REBOUND (DEF) by EDWARDS,CARSEN
09:22	FOUL (PERSONAL) by COWAN,ANTHONY			
09:22		48-49	V 1	GOOD! FT by EDWARDS,CARSEN [FB]
09:22	SUB OUT: SMITH,JALEN			
09:22	SUB IN: MORSELL,DARRYL			
09:22		49-49	T	GOOD! FT by EDWARDS,CARSEN [FB]
08:59	MISSED 3PTR by WIGGINS,AARON			
08:55	REBOUND (OFF) by MORSELL,DARRYL			
08:53	GOOD! 3PTR by COWAN,ANTHONY	49-52	V 3	
08:53	ASSIST by MORSELL,DARRYL			
08:32				MISSED 3PTR by EDWARDS,CARSEN
08:32	BLOCK by MORSELL,DARRYL			
08:31				REBOUND (OFF) by TEAM
08:21		52-52	T	GOOD! 3PTR by WHEELER,AARON
08:21				ASSIST by EASTERN,NOJEL
07:49	GOOD! JUMPER by COWAN,ANTHONY	52-54	V 2	
07:33				TURNOVER (LOSTBALL) by WHEELER,AARON
07:33				
07:33				SUB OUT: STEFANOVIC,SASHA
07:33				SUB IN: CLINE,RYAN
07:33	SUB OUT: SMITH JR.,SERREL			
07:33	SUB IN: AYALA,ERIC			
07:20	MISSED 3PTR by WIGGINS,AARON			
07:17				REBOUND (DEF) by EASTERN,NOJEL
07:16	FOUL (PERSONAL) by FERNANDO,BRUNO			
07:08	FOUL (PERSONAL) by WIGGINS,AARON			
06:55		55-54	H 1	GOOD! 3PTR by EDWARDS,CARSEN
06:22	TURNOVER (BADPASS) by FERNANDO,BRUNO			
06:22				STEAL by WHEELER,AARON
06:15		57-54	H 3	GOOD! LAYUP by WHEELER,AARON [FB/PNT]
06:15				ASSIST by EDWARDS,CARSEN
06:07	TIMEOUT TEAM			
06:07				SUB OUT: WHEELER,AARON
06:07				SUB IN: EIFERT,GRADY
05:52	MISSED JUMPER by FERNANDO,BRUNO			
05:46	REBOUND (OFF) by MORSELL,DARRYL			
05:46	MISSED DUNK by MORSELL,DARRYL			
05:45	REBOUND (OFF) by COWAN,ANTHONY			
05:37	MISSED DUNK by FERNANDO,BRUNO			
05:33				REBOUND (DEF) by CLINE,RYAN
05:32	SUB OUT: AYALA,ERIC			
05:32	SUB IN: SMITH,JALEN			
05:18		59-54	H 5	GOOD! DUNK by HAARMS,MATT
05:18				ASSIST by EDWARDS,CARSEN
04:44	TURNOVER (SHOTCLOCK) by			
04:35	FOUL (PERSONAL) by SMITH,JALEN			
04:33				MISSED JUMPER by EDWARDS,CARSEN
04:29				REBOUND (OFF) by EIFERT,GRADY
04:29	FOUL (PERSONAL) by SMITH,JALEN			
04:29				MISSED FT by EIFERT,GRADY
04:29	REBOUND (DEF) by SMITH,JALEN			
04:20	GOOD! JUMPER by SMITH,JALEN	59-56	H 3	
04:20	ASSIST by COWAN,ANTHONY			
03:47				MISSED 3PTR by EDWARDS,CARSEN
03:43	REBOUND (DEF) by FERNANDO,BRUNO			
03:39	TURNOVER (BADPASS) by COWAN,ANTHONY			
03:39				STEAL by EDWARDS,CARSEN
03:39				

Time	VISITORS: Maryland	Score	Margin	HOME: Purdue
03:39				SUB OUT: EIFERT,GRADY
03:39				SUB IN: WHEELER,AARON
03:18				FOUL (OFF) by CLINE,RYAN
03:18				TURNOVER (OFFENSIVE) by CLINE,RYAN
03:05	MISSED JUMPER by SMITH,JALEN			
03:03	REBOUND (OFF) by TEAM			
03:03				FOUL (PERSONAL) by CLINE,RYAN
02:35	MISSED JUMPER by COWAN,ANTHONY			
02:31				REBOUND (DEF) by CLINE,RYAN
02:10				MISSED JUMPER by EDWARDS,CARSEN
02:06	REBOUND (DEF) by SMITH,JALEN			
01:42	TURNOVER (BADPASS) by WIGGINS,AARON			
01:42				STEAL by EDWARDS,CARSEN
01:23				MISSED 3PTR by CLINE,RYAN
01:19	REBOUND (DEF) by SMITH,JALEN			
01:12	TIMEOUT TEAM			
01:12				SUB OUT: WHEELER,AARON
01:12				SUB IN: EIFERT,GRADY
01:12	SUB OUT: SMITH,JALEN			
01:12	SUB IN: AYALA,ERIC			
00:48	MISSED 3PTR by COWAN,ANTHONY			
00:47				REBOUND (DEF) by TEAM
00:47				SUB OUT: EIFERT,GRADY
00:47				SUB IN: WHEELER,AARON
00:26				TURNOVER (LOSTBALL) by EDWARDS,CARSEN
00:26	STEAL by FERNANDO,BRUNO			
00:18				FOUL (PERSONAL) by HAARMS,MATT
00:18	MISSED FT by MORSELL,DARRYL			
00:18	REBOUND (OFF) by TEAM			
00:18				SUB OUT: WHEELER,AARON
00:18				SUB IN: EIFERT,GRADY
00:18				SUB OUT: EASTERN,NOJEL
00:18				SUB IN: STEFANOVIC,SASHA
00:18	GOOD! FT by MORSELL,DARRYL [FB]	59-57	H 2	
00:18	SUB OUT: AYALA,ERIC			
00:18	SUB IN: SMITH,JALEN			
00:18	FOUL (PERSONAL) by COWAN,ANTHONY			
00:18				SUB OUT: STEFANOVIC,SASHA
00:18				SUB IN: EASTERN,NOJEL
00:18	SUB OUT: SMITH,JALEN			
00:18	SUB IN: AYALA,ERIC			
00:18		60-57	H 3	GOOD! FT by EIFERT,GRADY
00:18				MISSED FT by EIFERT,GRADY
00:18	REBOUND (DEF) by FERNANDO,BRUNO			
00:12				FOUL (PERSONAL) by EASTERN,NOJEL
00:12				TIMEOUT 30SEC
00:12	TIMEOUT 30SEC			
00:07				FOUL (PERSONAL) by EASTERN,NOJEL
00:07				SUB OUT: EASTERN,NOJEL
00:07				SUB IN: STEFANOVIC,SASHA
00:07	GOOD! FT by COWAN,ANTHONY	60-58	H 2	
00:07	GOOD! FT by COWAN,ANTHONY	60-59	H 1	
00:07	SUB OUT: FERNANDO,BRUNO			
00:07	SUB IN: SMITH JR.,SERREL			
00:07	FOUL (PERSONAL) by MORSELL,DARRYL			
00:07				SUB OUT: STEFANOVIC,SASHA
00:07				SUB IN: EASTERN,NOJEL
00:07	SUB OUT: MORSELL,DARRYL			
00:07	SUB IN: FERNANDO,BRUNO			
00:07		61-59	H 2	GOOD! FT by EDWARDS,CARSEN [FB]
00:07		62-59	H 3	GOOD! FT by EDWARDS,CARSEN [FB]
00:07				TIMEOUT TEAM
00:07				SUB OUT: HAARMS,MATT
00:07				SUB IN: WHEELER,AARON
00:04				FOUL (PERSONAL) by EDWARDS,CARSEN
00:04				SUB OUT: WHEELER,AARON
00:04				SUB IN: HAARMS,MATT
00:04	GOOD! FT by COWAN,ANTHONY [FB]	62-60	H 2	
00:04	SUB OUT: AYALA,ERIC			
00:04	SUB IN: SMITH,JALEN			
00:04	MISSED FT by COWAN,ANTHONY			
00:02	REBOUND (OFF) by TEAM			
00:02	SUB OUT: SMITH,JALEN			
00:02	SUB IN: MORSELL,DARRYL			
00:02				TIMEOUT 30SEC
00:02	MISSED 3PTR by COWAN,ANTHONY			
00:02				BLOCK by EASTERN,NOJEL
00:02				REBOUND (DEF) by EIFERT,GRADY

Maryland 60, Purdue 62

Points from (This Period)	UMD	PUR
In the Paint	4	10
Off Turns	3	5
2nd Chance	3	6
Fast Break	6	6
Bench	3	9

**This period only:UMD led for 26:02. PUR led for 26:57.
Game was tied for 0:58.**

Official Scoring/Possession Reference Chart
Maryland vs Purdue
Period 1
December 07, 2018 at Mackey Arena (Keady Court) - Lafayette, IN

Starters:

Maryland: 1 COWAN,ANTHONY; 5 AYALA,ERIC; 11 MORSELL,DARRYL; 23 FERNANDO,BRUNO; 25 SMITH,JALEN;
Purdue: 3 EDWARDS,CARSEN; 14 CLINE,RYAN; 20 EASTERN,NOJEL; 24 EIFERT,GRADY; 32 HAARMS,MATT;

Period 1

Time	VISITORS: Maryland	Score	Margin	HOME: Purdue
19:00	GOOD! JUMPER by MORSELL,DARRYL	0-2	V 2	
18:50		3-2	H 1	GOOD! 3PTR by EIFERT,GRADY
18:24	GOOD! 3PTR by SMITH,JALEN	3-5	V 2	
18:02		5-5	T	GOOD! JUMPER by HAARMS,MATT
17:24		7-5	H 2	GOOD! LAYUP by EASTERN,NOJEL [FB]
16:34		8-5	H 3	GOOD! FT by HAARMS,MATT [FB]
16:16	GOOD! JUMPER by COWAN,ANTHONY [PNT]	8-7	H 1	
15:40	GOOD! LAYUP by FERNANDO,BRUNO [PNT]	8-9	V 1	
14:59	GOOD! 3PTR by MORSELL,DARRYL	8-12	V 4	
13:42	GOOD! 3PTR by WIGGINS,AARON	8-15	V 7	
13:26		10-15	V 5	GOOD! DUNK by WHEELER,AARON
13:26	GOOD! 3PTR by LINDO JR.,RICKY	10-18	V 8	
10:40		13-18	V 5	GOOD! 3PTR by WHEELER,AARON
09:46		15-18	V 3	GOOD! JUMPER by HAARMS,MATT
08:15	GOOD! FT by COWAN,ANTHONY	15-19	V 4	
07:38		18-19	V 1	GOOD! 3PTR by EDWARDS,CARSEN
06:52	GOOD! LAYUP by SMITH,JALEN	18-21	V 3	
06:40		19-21	V 2	GOOD! FT by EDWARDS,CARSEN
06:40		20-21	V 1	GOOD! FT by EDWARDS,CARSEN
06:40		21-21	T	GOOD! FT by EDWARDS,CARSEN
06:22	GOOD! LAYUP by AYALA,ERIC [PNT]	21-23	V 2	
05:58	GOOD! LAYUP by MORSELL,DARRYL [FB]	21-25	V 4	
05:15		23-25	V 2	GOOD! LAYUP by EASTERN,NOJEL
04:59	GOOD! FT by FERNANDO,BRUNO	23-26	V 3	
04:59	GOOD! FT by FERNANDO,BRUNO	23-27	V 4	
04:41		25-27	V 2	GOOD! JUMPER by EDWARDS,CARSEN
04:24	GOOD! DUNK by FERNANDO,BRUNO	25-29	V 4	
03:48		26-29	V 3	GOOD! FT by EDWARDS,CARSEN
03:48		27-29	V 2	GOOD! FT by EDWARDS,CARSEN
03:01	GOOD! 3PTR by WIGGINS,AARON [FB]	27-32	V 5	
01:03	GOOD! FT by COWAN,ANTHONY [FB]	27-33	V 6	
01:03	GOOD! FT by COWAN,ANTHONY [FB]	27-34	V 7	
00:06		30-34	V 4	GOOD! 3PTR by WHEELER,AARON

Maryland 34, Purdue 30

Official Scoring/Possession Reference Chart
Maryland vs Purdue
Period 2
December 07, 2018 at Mackey Arena (Keady Court) - Lafayette, IN

Starters:

Maryland: 1 COWAN,ANTHONY; 5 AYALA,ERIC; 11 MORSELL,DARRYL; 23 FERNANDO,BRUNO; 25 SMITH,JALEN;
Purdue: 3 EDWARDS,CARSEN; 14 CLINE,RYAN; 20 EASTERN,NOJEL; 24 EIFERT,GRADY; 32 HAARMS,MATT;

Period 2

Time	VISITORS: Maryland	Score	Margin	HOME: Purdue
19:08		33-34	V 1	GOOD! 3PTR by EDWARDS,CARSEN
17:43	GOOD! LAYUP by MORSELL,DARRYL	33-36	V 3	
17:22		34-36	V 2	GOOD! FT by CLINE,RYAN
17:22		35-36	V 1	GOOD! FT by CLINE,RYAN
16:42	GOOD! DUNK by MORSELL,DARRYL [FB]	35-38	V 3	
16:07	GOOD! 3PTR by FERNANDO,BRUNO	35-41	V 6	
15:34		38-41	V 3	GOOD! 3PTR by HAARMS,MATT

Time	VISITORS: Maryland	Score	Margin	HOME: Purdue
15:06		41-41	T	GOOD! 3PTR by EIFERT,GRADY
14:37	GOOD! FT by COWAN,ANTHONY [FB]	41-42	V 1	
14:37	GOOD! FT by COWAN,ANTHONY [FB]	41-43	V 2	
14:22		43-43	T	GOOD! JUMPER by BOUDREAU X,EVAN [PNT]
13:50	GOOD! 3PTR by COWAN,ANTHONY	43-46	V 3	
13:29		45-46	V 1	GOOD! JUMPER by CLINE,RYAN [PNT]
11:39		47-46	H 1	GOOD! LAYUP by WHEELER,AARON
10:44	GOOD! 3PTR by WIGGINS,AARON	47-49	V 2	
09:22		48-49	V 1	GOOD! FT by EDWARDS,CARSEN [FB]
09:22		49-49	T	GOOD! FT by EDWARDS,CARSEN [FB]
08:53	GOOD! 3PTR by COWAN,ANTHONY	49-52	V 3	
08:21		52-52	T	GOOD! 3PTR by WHEELER,AARON
07:49	GOOD! JUMPER by COWAN,ANTHONY	52-54	V 2	
06:55		55-54	H 1	GOOD! 3PTR by EDWARDS,CARSEN
06:15		57-54	H 3	GOOD! LAYUP by WHEELER,AARON [FB/PNT]
05:18		59-54	H 5	GOOD! DUNK by HAARMS,MATT
04:20	GOOD! JUMPER by SMITH,JALEN	59-56	H 3	
00:18	GOOD! FT by MORSELL,DARRYL [FB]	59-57	H 2	
00:18		60-57	H 3	GOOD! FT by EIFERT,GRADY
00:07	GOOD! FT by COWAN,ANTHONY	60-58	H 2	
00:07	GOOD! FT by COWAN,ANTHONY	60-59	H 1	
00:07		61-59	H 2	GOOD! FT by EDWARDS,CARSEN [FB]
00:07		62-59	H 3	GOOD! FT by EDWARDS,CARSEN [FB]
00:04	GOOD! FT by COWAN,ANTHONY [FB]	62-60	H 2	

Maryland 60, Purdue 62

Official Substitutions Log Maryland vs Purdue Period 1 December 07, 2018 at Mackey Arena (Keady Court) - Lafayette, IN

VISITORS: Maryland	Time	Score	HOME: Purdue
1 COWAN,ANTHONY			3 EDWARDS,CARSEN
5 AYALA,ERIC			14 CLINE,RYAN
11 MORSELL,DARRYL			20 EASTERN,NOJEL
23 FERNANDO,BRUNO			24 EIFERT,GRADY
25 SMITH,JALEN			32 HAARMS,MATT
	16:34	5-7	SUB OUT: EASTERN,NOJEL
	16:34		SUB IN: HUNTER JR.,ERIC
SUB OUT: 25 SMITH,JALEN	16:34		
SUB IN: 2 WIGGINS,AARON	16:34		
	15:52	7-8	SUB OUT: HAARMS,MATT
	15:52		SUB IN: BOUDREAU X,EVAN
	14:39	12-8	SUB OUT: EIFERT,GRADY
	14:39		SUB IN: WHEELER,AARON
	14:39		SUB OUT: HUNTER JR.,ERIC
	14:39		SUB IN: EASTERN,NOJEL
SUB OUT: 11 MORSELL,DARRYL	14:00	12-8	
SUB IN: 25 SMITH,JALEN	14:00		
SUB OUT: 23 FERNANDO,BRUNO	14:00		
SUB IN: 14 LINDO JR.,RICKY	14:00		
SUB OUT: 5 AYALA,ERIC	13:27	15-8	
SUB IN: 10 SMITH JR.,SERREL	13:27		
	12:41	18-10	SUB OUT: EDWARDS,CARSEN
	12:41		SUB IN: STEFANOVIC,SASHA
	12:41		SUB OUT: BOUDREAU X,EVAN
	12:41		SUB IN: HAARMS,MATT
SUB OUT: 1 COWAN,ANTHONY	12:02	18-10	
SUB IN: 0 TOMAIC,JOSHUA	12:02		
SUB OUT: 14 LINDO JR.,RICKY	12:02		
SUB IN: 10 SMITH JR.,SERREL	12:02		
SUB OUT: 25 SMITH,JALEN	11:53	18-10	
SUB IN: 23 FERNANDO,BRUNO	11:53		
SUB IN: 5 AYALA,ERIC	11:53		
	10:09	18-13	SUB OUT: CLINE,RYAN
	10:09		SUB IN: EDWARDS,CARSEN
SUB OUT: 10 SMITH JR.,SERREL	10:09		
SUB IN: 1 COWAN,ANTHONY	10:09		
SUB OUT: 0 TOMAIC,JOSHUA	10:09		
SUB IN: 11 MORSELL,DARRYL	10:09		
SUB OUT: 2 WIGGINS,AARON	09:06	18-15	

VISITORS: Maryland	Time	Score	HOME: Purdue
SUB IN: 25 SMITH, JALEN	09:06		
	08:30	18-15	SUB OUT: EASTERN, NOJEL
	08:30		SUB IN: BOUDREAU, EVAN
	08:30		SUB OUT: HAARMS, MATT
	08:30		SUB IN: HUNTER JR., ERIC
	08:15	19-15	SUB OUT: STEFANOVIC, SASHA
	08:15		SUB IN: CLINE, RYAN
	08:09	19-15	SUB OUT: WHEELER, AARON
	08:09		SUB IN: EIFERT, GRADY
SUB OUT: 23 FERNANDO, BRUNO	07:56	19-15	
SUB IN: 2 WIGGINS, AARON	07:56		
	06:40	21-20	SUB OUT: HUNTER JR., ERIC
	06:40		SUB IN: EASTERN, NOJEL
SUB OUT: 25 SMITH, JALEN	05:32	25-21	
SUB IN: 23 FERNANDO, BRUNO	05:32		
	04:59	26-23	SUB OUT: BOUDREAU, EVAN
	04:59		SUB IN: HAARMS, MATT
	04:59		SUB OUT: EIFERT, GRADY
	04:59		SUB IN: WHEELER, AARON
	04:09	29-25	SUB OUT: HAARMS, MATT
	04:09		SUB IN: BOUDREAU, EVAN
SUB OUT: 5 AYALA, ERIC	04:09		
SUB IN: 10 SMITH JR., SERREL	04:09		
	02:27	32-27	SUB OUT: EDWARDS, CARSEN
	02:27		SUB IN: STEFANOVIC, SASHA
	02:22	32-27	SUB OUT: BOUDREAU, EVAN
	02:22		SUB IN: EDWARDS, CARSEN
	02:22		SUB OUT: STEFANOVIC, SASHA
	02:22		SUB IN: WILLIAMS, TREVION
SUB OUT: 10 SMITH JR., SERREL	02:22		
SUB IN: 5 AYALA, ERIC	02:22		
	01:22	32-27	SUB OUT: EASTERN, NOJEL
	01:22		SUB IN: STEFANOVIC, SASHA
	01:22		SUB OUT: WILLIAMS, TREVION
	01:22		SUB IN: BOUDREAU, EVAN
SUB OUT: 23 FERNANDO, BRUNO	01:22		
SUB IN: 25 SMITH, JALEN	01:22		
SUB OUT: 25 SMITH, JALEN	01:03	33-27	
SUB IN: 0 TOMAIC, JOSHUA	01:03		
	00:45	34-27	SUB OUT: EDWARDS, CARSEN
	00:45		SUB IN: EASTERN, NOJEL
	00:23	34-27	SUB OUT: STEFANOVIC, SASHA
	00:23		SUB IN: EDWARDS, CARSEN

Maryland 34, Purdue 30

Official Substitutions Log Maryland vs Purdue Period 2

December 07, 2018 at Mackey Arena (Keady Court) - Lafayette, IN

VISITORS: Maryland	Time	Score	HOME: Purdue
1 COWAN, ANTHONY			3 EDWARDS, CARSEN
5 AYALA, ERIC			14 CLINE, RYAN
11 MORSELL, DARRYL			20 EASTERN, NOJEL
23 FERNANDO, BRUNO			24 EIFERT, GRADY
25 SMITH, JALEN			32 HAARMS, MATT
	18:39	34-33	SUB OUT: EASTERN, NOJEL
	18:39		SUB IN: HUNTER JR., ERIC
	14:37	41-41	SUB OUT: HUNTER JR., ERIC
	14:37		SUB IN: EASTERN, NOJEL
	14:37		SUB OUT: HAARMS, MATT
	14:37		SUB IN: BOUDREAU, EVAN
SUB OUT: 25 SMITH, JALEN	14:37		
SUB IN: 2 WIGGINS, AARON	14:37		
	13:04	46-45	SUB OUT: EIFERT, GRADY
	13:04		SUB IN: WHEELER, AARON
	12:41	46-45	SUB OUT: EDWARDS, CARSEN
	12:41		SUB IN: STEFANOVIC, SASHA
SUB OUT: 5 AYALA, ERIC	12:41		
SUB IN: 10 SMITH JR., SERREL	12:41		
SUB OUT: 23 FERNANDO, BRUNO	12:41		
SUB IN: 25 SMITH, JALEN	12:41		
SUB OUT: 1 COWAN, ANTHONY	11:49	46-45	
SUB IN: 23 FERNANDO, BRUNO	11:49		
SUB OUT: 11 MORSELL, DARRYL	11:49		
SUB IN: 5 AYALA, ERIC	11:49		
	10:17	49-47	SUB OUT: CLINE, RYAN
	10:17		SUB IN: EDWARDS, CARSEN
SUB OUT: 5 AYALA, ERIC	10:17		
SUB IN: 1 COWAN, ANTHONY	10:17		
	10:17		SUB OUT: BOUDREAU, EVAN
	10:17		SUB IN: HAARMS, MATT
SUB OUT: 25 SMITH, JALEN	09:22	49-48	
SUB IN: 11 MORSELL, DARRYL	09:22		

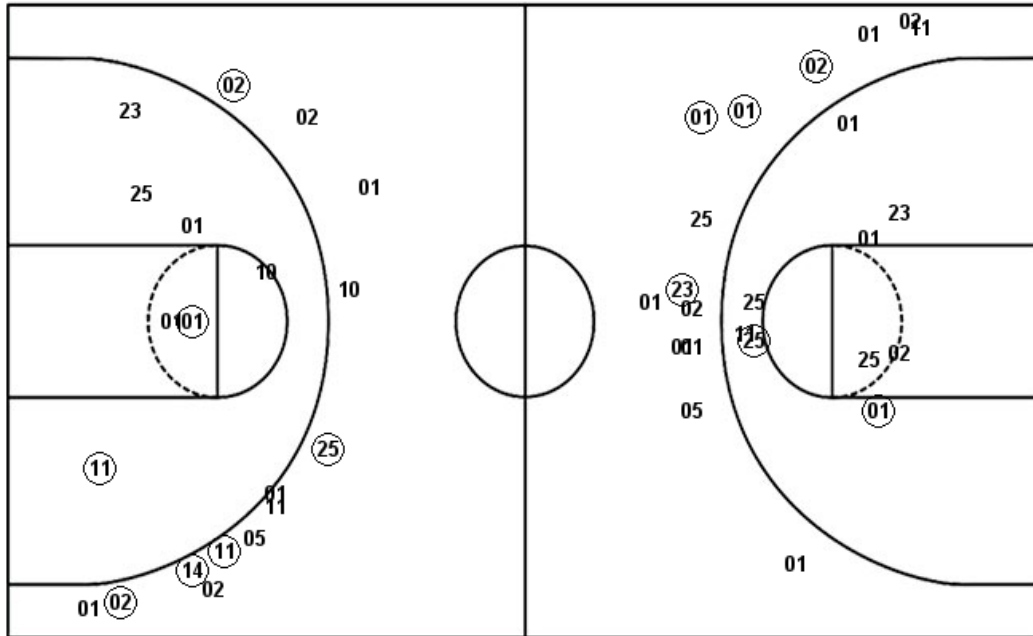
VISITORS: Maryland	Time	Score	HOME: Purdue
	07:33	54-52	SUB OUT: STEFANOVIC, SASHA
	07:33		SUB IN: CLINE, RYAN
SUB OUT: 10 SMITH JR., SERREL	07:33		
SUB IN: 5 AYALA, ERIC	07:33		
	06:07	54-57	SUB OUT: WHEELER, AARON
	06:07		SUB IN: EIFERT, GRADY
SUB OUT: 5 AYALA, ERIC	05:32	54-57	
SUB IN: 25 SMITH, JALEN	05:32		
	03:39	56-59	SUB OUT: EIFERT, GRADY
	03:39		SUB IN: WHEELER, AARON
	01:12	56-59	SUB OUT: WHEELER, AARON
	01:12		SUB IN: EIFERT, GRADY
SUB OUT: 25 SMITH, JALEN	01:12		
SUB IN: 5 AYALA, ERIC	01:12		
	00:47	56-59	SUB OUT: EIFERT, GRADY
	00:47		SUB IN: WHEELER, AARON
	00:18	56-59	SUB OUT: WHEELER, AARON
	00:18		SUB IN: EIFERT, GRADY
	00:18		SUB OUT: EASTERN, NOJEL
	00:18		SUB IN: STEFANOVIC, SASHA
SUB OUT: 5 AYALA, ERIC	00:18		
SUB IN: 25 SMITH, JALEN	00:18		
	00:18		SUB OUT: STEFANOVIC, SASHA
	00:18		SUB IN: EASTERN, NOJEL
SUB OUT: 25 SMITH, JALEN	00:18		
SUB IN: 5 AYALA, ERIC	00:18		
	00:07	57-60	SUB OUT: EASTERN, NOJEL
	00:07		SUB IN: STEFANOVIC, SASHA
SUB OUT: 23 FERNANDO, BRUNO	00:07		
SUB IN: 10 SMITH JR., SERREL	00:07		
	00:07		SUB OUT: STEFANOVIC, SASHA
	00:07		SUB IN: EASTERN, NOJEL
SUB OUT: 11 MORSELL, DARRYL	00:07		
SUB IN: 23 FERNANDO, BRUNO	00:07		
	00:07		SUB OUT: HAARMS, MATT
	00:07		SUB IN: WHEELER, AARON
	00:04	59-62	SUB OUT: WHEELER, AARON
	00:04		SUB IN: HAARMS, MATT
SUB OUT: 5 AYALA, ERIC	00:04		
SUB IN: 25 SMITH, JALEN	00:04		
SUB OUT: 25 SMITH, JALEN	00:02	60-62	
SUB IN: 11 MORSELL, DARRYL	00:02		

Maryland 60, Purdue 62

Official Shot Chart
Maryland vs Purdue
Maryland Team Shots
December 07, 2018 at Mackey Arena (Keady Court) - Lafayette, IN

Layups

Dunks



Layups

Dunks

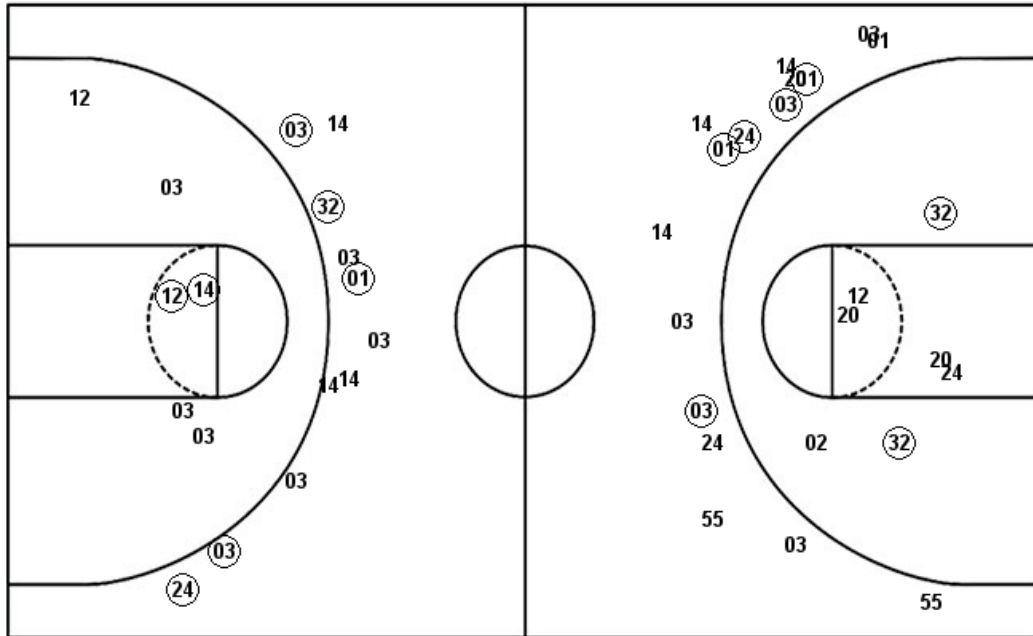
UMD : Period 1	Made	Att	Pct
Layups	4	8	50.0
Dunks	1	1	100.0
2PT Field Goals	7	16	43.8
3PT Field Goals	5	13	38.5
Total Field Goals	12	29	41.4

UMD : Period 2	Made	Att	Pct
Layups	1	2	50.0
Dunks	1	3	33.3
2PT Field Goals	4	14	28.6
3PT Field Goals	4	14	28.6
Total Field Goals	8	28	28.6

Official Shot Chart
Maryland vs Purdue
Purdue Team Shots
December 07, 2018 at Mackey Arena (Keady Court) - Lafayette, IN

Layups

Dunks



Layups

Dunks

PUR : Period 1	Made	Att	Pct
Layups	2	4	50.0
Dunks	1	1	100.0
2PT Field Goals	6	13	46.2
3PT Field Goals	4	15	26.7
Total Field Goals	10	28	35.7

PUR : Period 2	Made	Att	Pct
Layups	2	4	50.0
Dunks	1	1	100.0
2PT Field Goals	5	11	45.5
3PT Field Goals	5	11	45.5
Total Field Goals	10	22	45.5